



WAUSAU
PAVING

TABLE OF CONTENTS

EcoPremier pavers	Page 2
Sand Series	Page 4
UltraFace pavers	Page 6
Textured Granite pavers	Page 8
Textured Sand pavers	Page 10
Stoney Creek pavers	Page 12
Granitex pavers	Page 16
ExpoStone pavers	Page 20
ExpoGranite pavers	Page 22
Exterior Terrazzo pavers	Page 24
SeaShell pavers	Page 26
CoolSeries pavers	Page 28
Washed Glass pavers	Page 30
Blasted Glass pavers	Page 32
Ballast pavers	Page 34
Detectable Warning pavers	Page 36
Lok-Down system	Page 46
Modular patterns	Page 50
Permeable pavers	Page 52
Engraved pavers	Page 53
Accent pavers	Page 54
Installation	Page 56
Waterjet designs	Page 67
Custom precast	Page 68

WAUSAUPAVING

The architectural concrete pavers offered in this catalog are manufactured in Wausau, Wisconsin by:

Wausau Tile, Inc.
PO Box 1520
Wausau, Wisconsin 54402-1520
wausautile.com
wausaupaving.com
wtile@wausautile.com
800-388-8728
715-359-7456 Fax

Ed Creske in 1953

Founded by



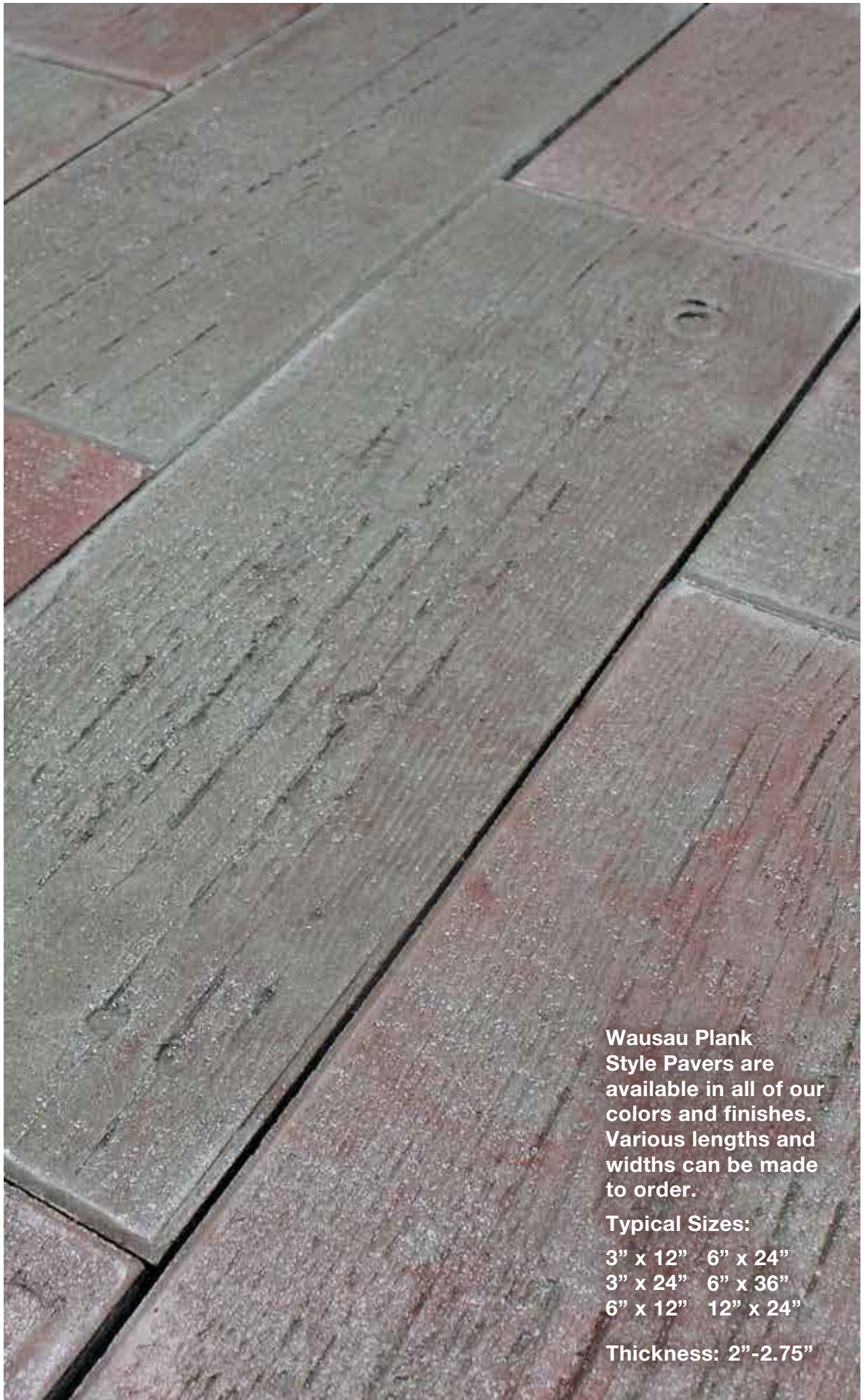
Paver colors are representative only.
Please request samples to confirm your selection.
Paver sizes stated are nominal.

On the cover:
Oak brook Center, Oakbrook, IL



In the manufacturing process Wausau Tile hydraulically presses all of its pavers using a two-part mix. The face mix covers approximately 1/2" of total thickness of the paver. This allows for flexibility in creating over 20 different paver styles. Custom pavers are also available. The face mix will not wear away or separate from the back mix. The face mix will remain throughout the life of the paver. The back mix contains additives that increase overall paver strengths.

Wood Grain Pavers



**Wausau Plank
Style Pavers are
available in all of our
colors and finishes.
Various lengths and
widths can be made
to order.**

Typical Sizes:

3" x 12" 6" x 24"

3" x 24" 6" x 36"

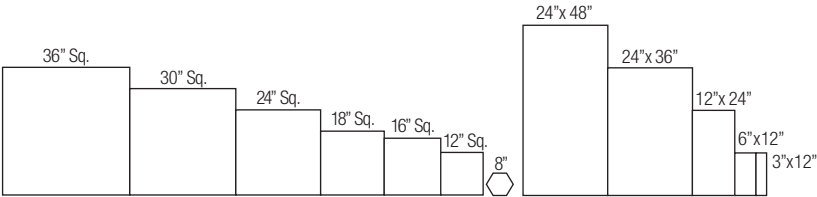
6" x 12" 12" x 24"

Thickness: 2"-2.75"

WAUSAU EcoPremier PAVERS

Wausau EcoPremier Pavers

feature recycled porcelain aggregate. The surface is sandblasted. Offered in seven standard colors), with custom colors available.



Wausau EcoPremier pavers are available in these sizes, in modular patterns and plank style pavers. Custom sizes available.
Standard Thickness = 2" - 2.75"

EP-10



EP-20



EP-30





Oakbrook Center, Oak Brook, IL



Wausau Tile's concrete based pavers with recycled glass or recycled porcelain may qualify for LEED credits that may contribute toward your project certification.

In 2013, Wausau Tile recycled over 1,784,000 pounds of porcelain that otherwise would be destined for the landfill.

EP-70



EP-40



EP-50



EP-60



WAUSAU SandSeries PAVERS

Wausau SandSeries Pavers


are shown in three colors in 24" squares only in a shot blasted finish. Each is stocked for quick shipment within 15 business days, based on availability. Custom colors available. Standard Thickness = 2"

SS-10 

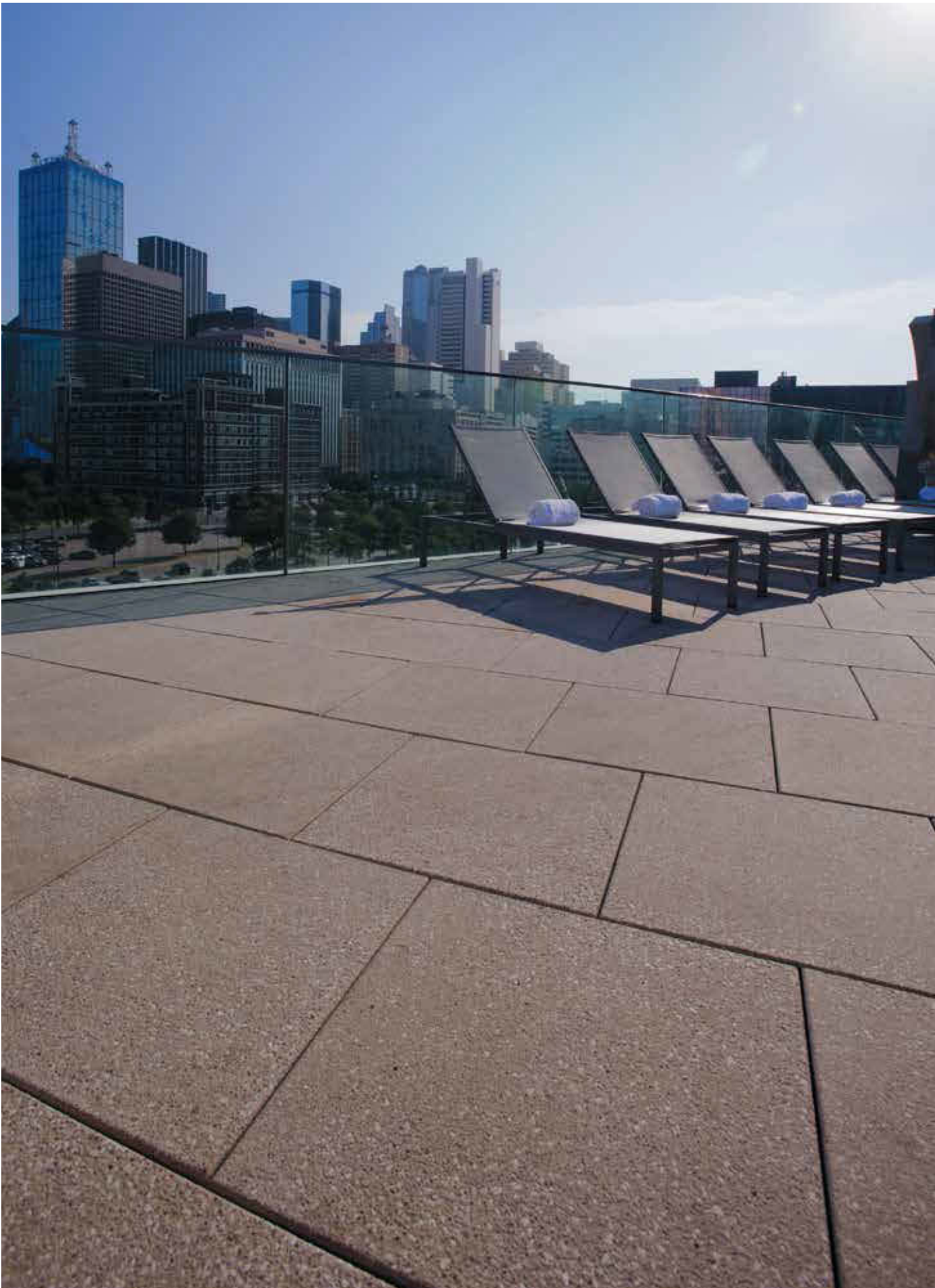


SS-20 



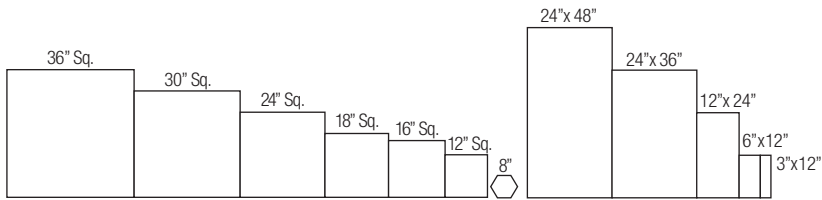
SS-30 





Omni Hotel, Fort Worth, TX

WAUSAU UltraFace PAVERS



Wausau UltraFace pavers are available in these sizes, in modular patterns and plank style pavers, all with Shot blasted finish. Custom sizes available. "Quik Ship" items are stocked in 24" squares (2" thick) and ship within 15 business days based on availability. Standard Thickness = 2" - 2.75"

Wausau UltraFace Pavers

are shown in six colors. For a complete offering, visit www.wausaupaving.com. Custom colors are also available.

UF-10 



UF-20 



UF-30 





Ameristar Casino, St. Charles, MO

UF-40 



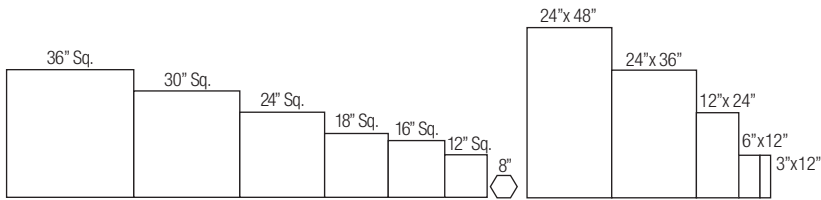
UF-50 



UF-60



WAUSAU Textured Granite PAVERS




Wausau Textured Granite pavers are available in these sizes, in modular patterns and plank style pavers, all with shot blasted finish. Custom sizes available. "Quik Ship" items are stocked in 24" squares (2" thick) and ship within 15 business days based on availability. Standard Thickness = 2" - 2.75"

Wausau Textured Granite Pavers are available in six colors. Custom colors available.

UG-10 



UG-20 



UG-30





Celebrezze Federal Building, Cleveland, OH

UG-40



UG-50



UG-60



WAUSAU **Textured Sand PAVERS**

Wausau Textured Sand Pavers

are shown in six colors in 24" squares only in a shot blasted finish. Each is stocked for quick shipment within 15 business days, based on availability. Custom colors available. Standard Thickness = 2"

Wausau Textured Sand

Pavers are available in six colors. Custom colors available.

TS-20



TS-30



TS-40





One Hawthorne, San Francisco, CA

TS-50 



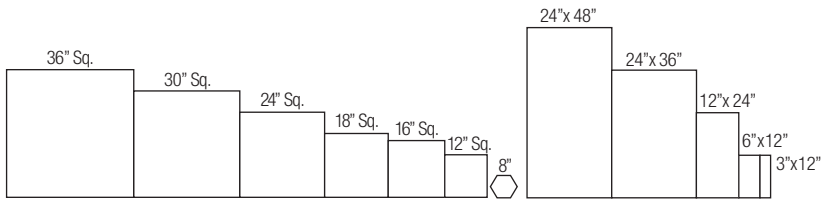
TS-60 



TS-70 



WAUSAU Stoney Creek PAVERS



Wausau Stoney Creek pavers are available in these sizes, in modular patterns and plank style pavers. "Quik Ship" items are stocked in 24" squares (2" thick) and ship within 15 business days based on availability. Standard Thickness = 2" - 2.75"

Wausau Stoney Creek Pavers are shown in six colors (pages 12-15). Custom colors available.

SC-10 

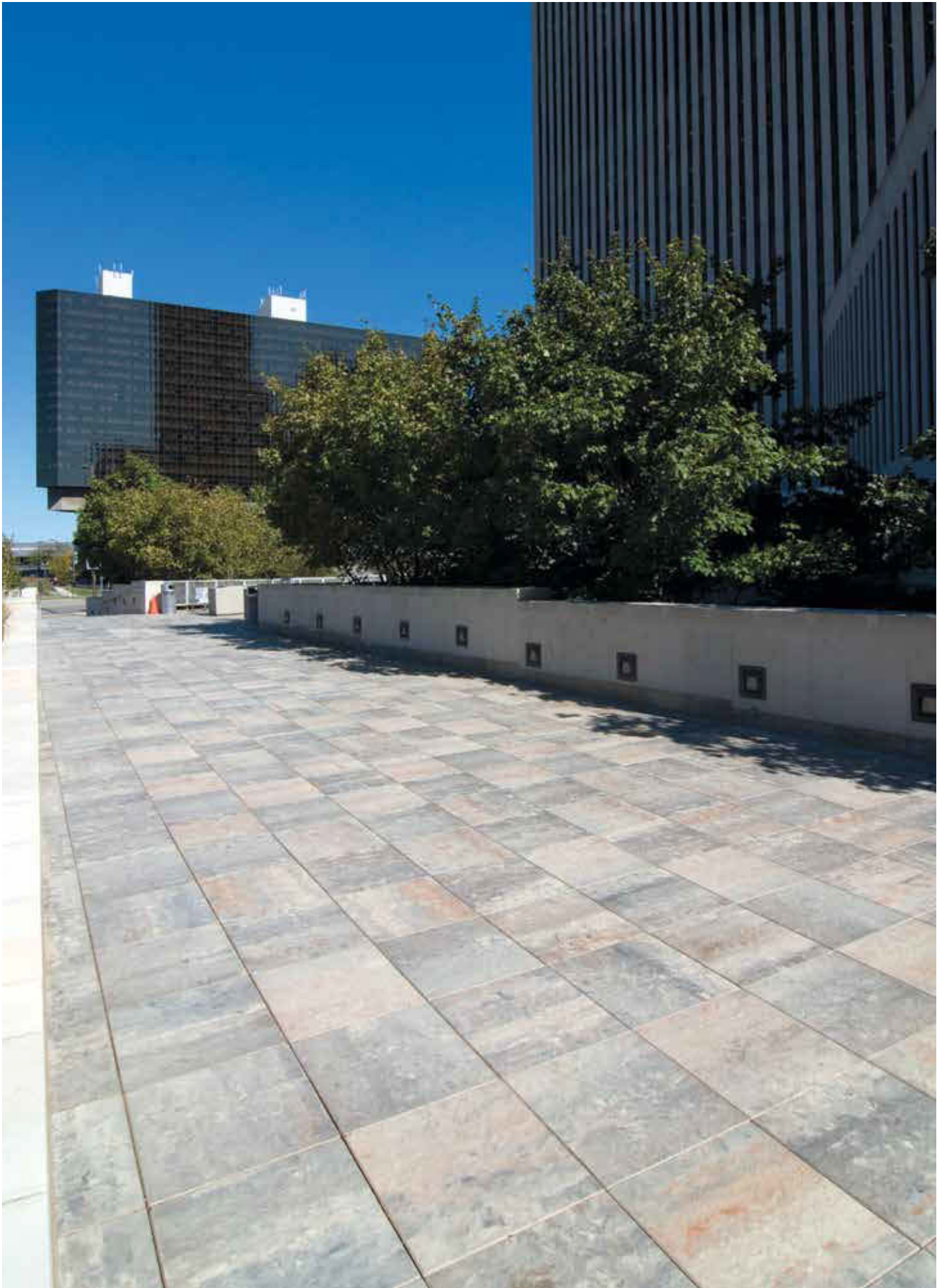


SC-20



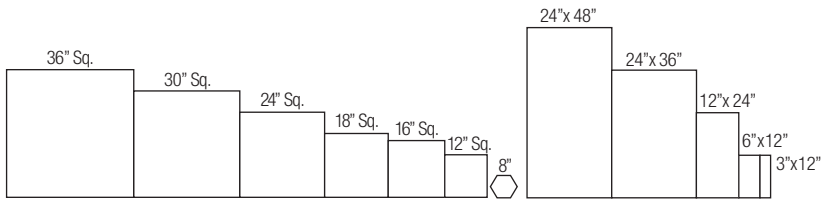
SC-30 





Nationwide Plaza, Columbus, OH

WAUSAU Stoney Creek PAVERS



Wausau Stoney Creek pavers are available in these sizes, in modular patterns and plank style pavers. "Quik Ship" items are stocked in 24" squares (2" thick) and ship within 15 business days based on availability. Standard Thickness = 2" - 2.75"

Wausau Stoney Creek Pavers are shown in six colors (pages 12-15). Custom colors available.

SC-40 



SC-50 (Shown in slate finish)



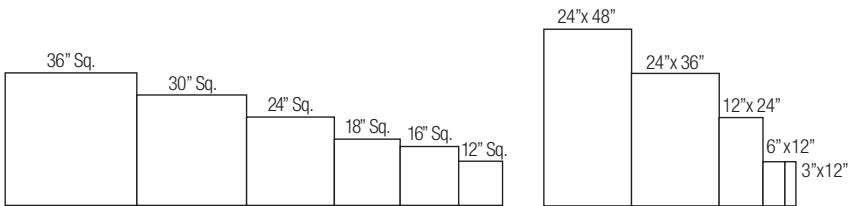
SC-60





Hollywood Casino, Toledo, OH

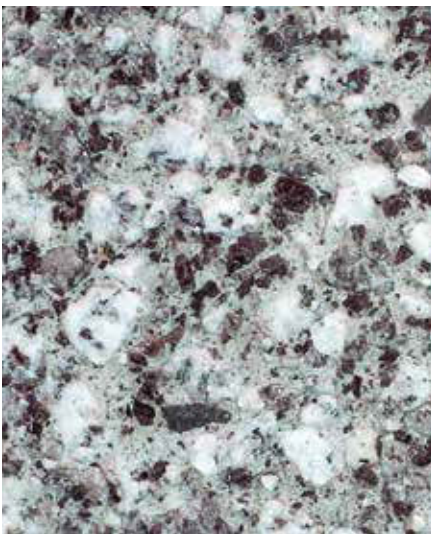
WAUSAU Granitex PAVERS



Wausau Granitex Pavers are available in these sizes, in modular patterns and plank style pavers. Standard Thickness = 2" - 2.75"

Wausau Granitex Pavers are shown in twelve colors and two series. (pages 16-19). Custom colors available.

GTX-10



GTX-20



GTX-30





Ameristar Casino, St. Charles, MO

GTX2-40



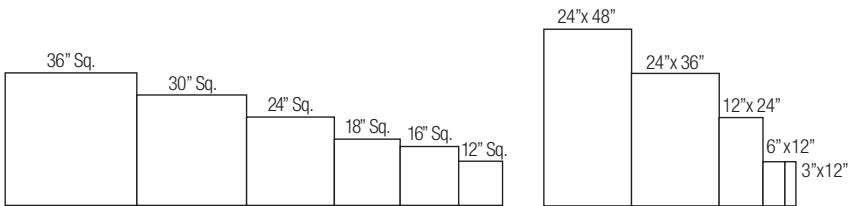
GTX2-50



GTX-60



WAUSAU Granitex PAVERS



Wausau Granitex pavers are available in these sizes, in modular patterns and plank style pavers.
Standard Thickness = 2" - 2.75"

Wausau Granitex Pavers are shown in twelve colors and two series. Custom colors available.

GTX-70



GTX-80



GTX-90





Oakbrook Center, Oak Brook, IL

GTX2-100



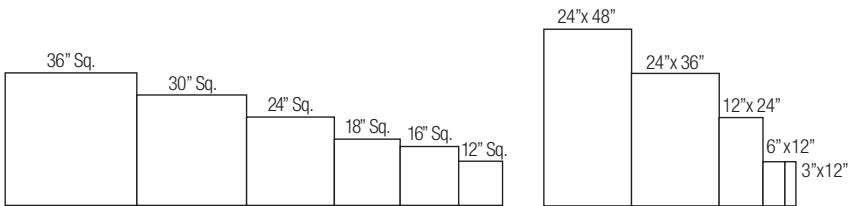
GTX2-110



GTX-120



WAUSAU ExpoStone PAVERS



Wausau ExpoStone pavers are available in these sizes, in modular patterns and plank style pavers. Custom sizes available. Standard Thickness = 2" - 2.75"

Wausau ExpoStone Pavers are shown in six colors. Custom colors available.

ES-10



ES-20



ES-30





Foundry Square, San Francisco, CA

ES-40



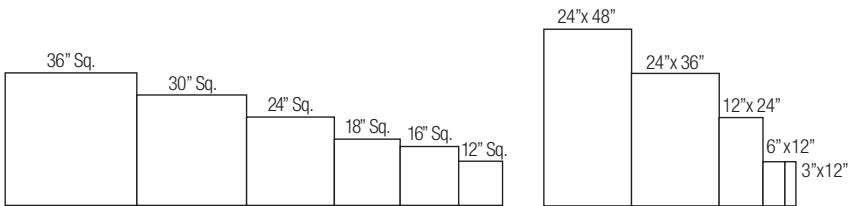
ES-50



ES-60



WAUSAU Expo Granite PAVERS



Wausau ExpoGranite pavers are available in these sizes, in modular patterns and plank style pavers. Custom sizes available. Standard Thickness = 2" - 2.75"

Wausau ExpoGranite Pavers are shown in three colors. Custom colors available.

EG-10

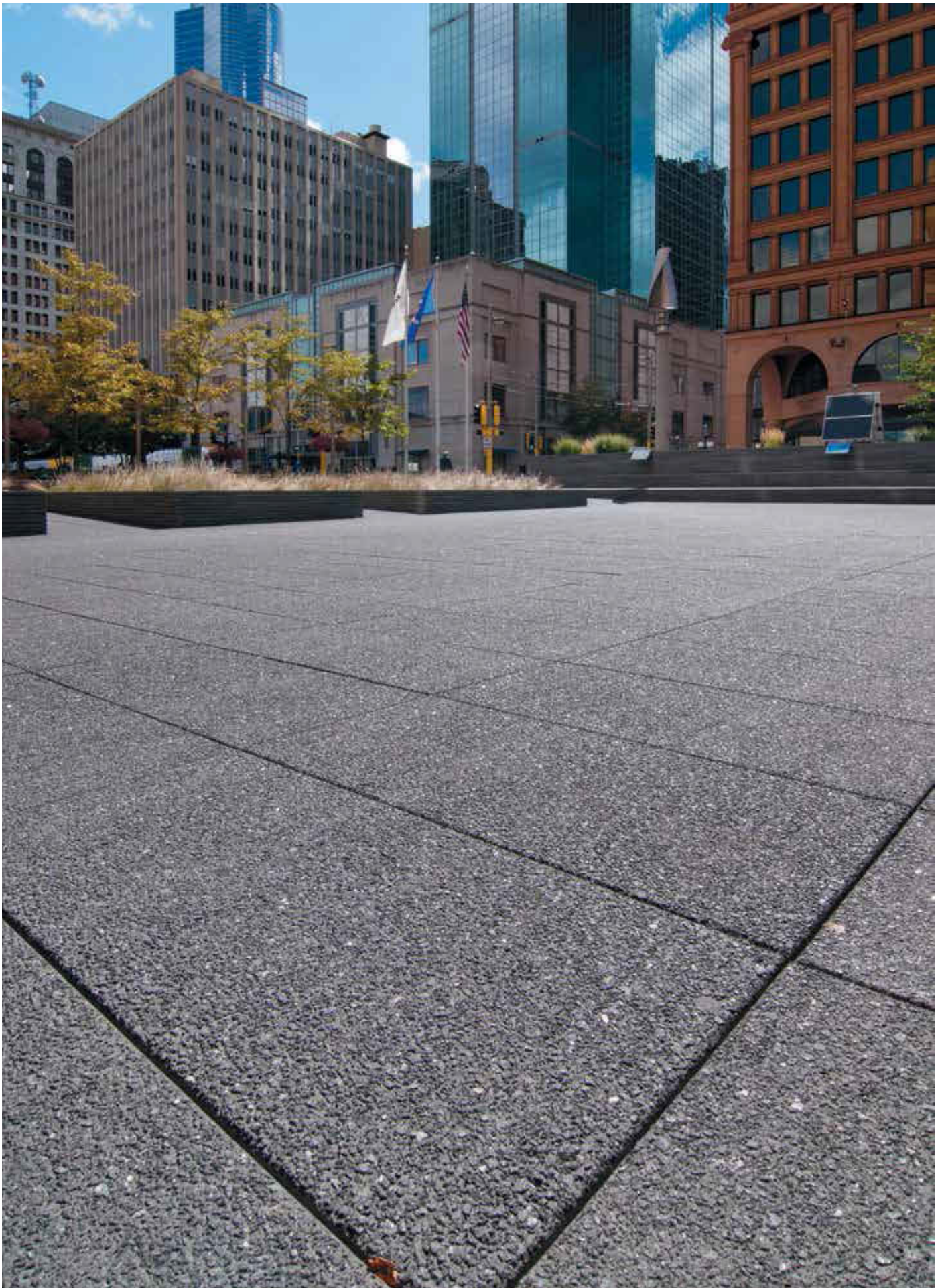


EG-20



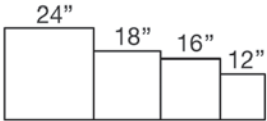
EG-30





Xcel Plaza, Minneapolis, MN

WAUSAU Exterior Terrazzo PAVERS



Wausau Exterior Terrazzo pavers are available in these sizes and plank style pavers. Custom sizes available. Standard Thickness = 2" - 2.75"

Wausau Exterior Terrazzo Pavers are shown in five colors and standard finishes: ground, shotblast and sealed. Custom colors available.

ET-10



ET-20



ET-30





Mint Plaza, San Francisco, CA

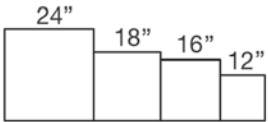
ET-40



ET-50



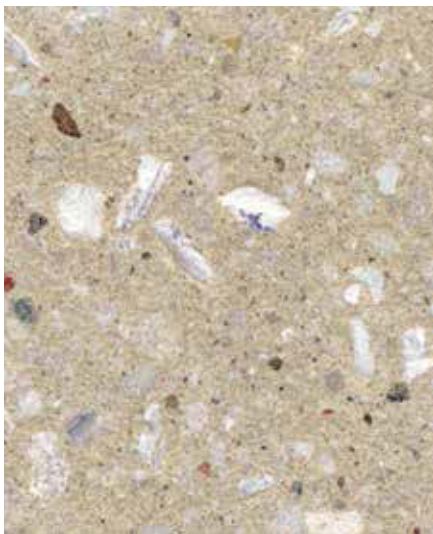
WAUSAU SeaShell PAVERS



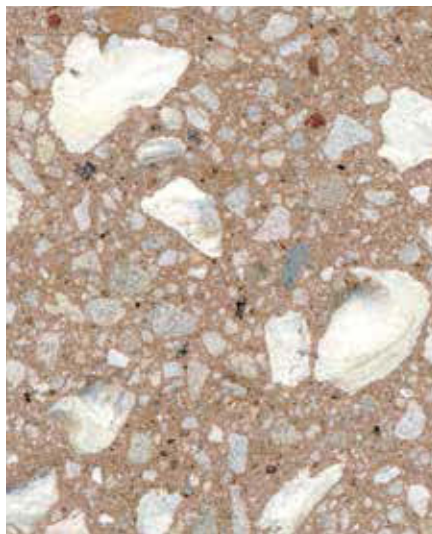
Wausau SeaShell pavers are available in these sizes and plank style pavers. Custom sizes available.
Standard Thickness = 2" - 2.75"

Wausau SeaShell Pavers are shown in five colors. Custom colors available.

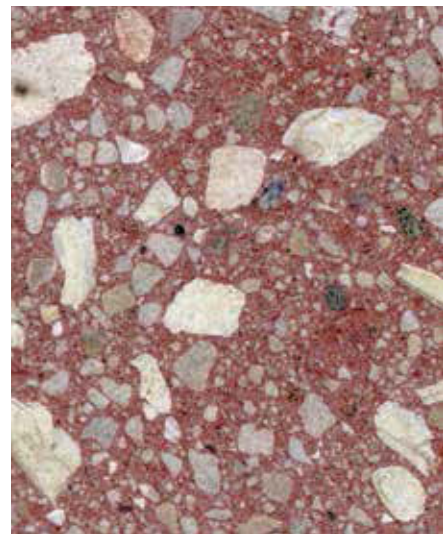
SEA-10



SEA-20



SEA-30





Omni Hotel, Dallas, TX

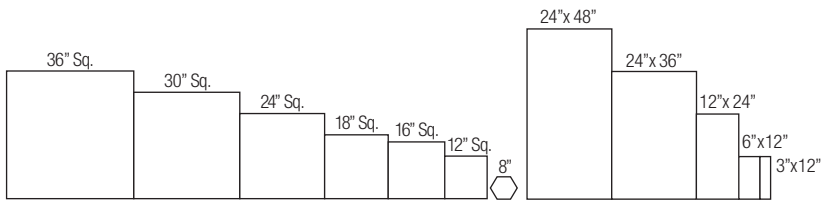
SEA-40



SEA-50



WAUSAU Cool Series PAVERS



Wausau Cool Series pavers are available in these sizes, in modular patterns and plank style pavers. Custom sizes available. Standard Thickness = 2" - 2.75"

Wausau Cool Series Pavers are shown in six colors. Custom colors available. Cool pavers have a minimum 78% solar reflectance index (SRI).

C-10 (SRI 94.8)



CB-15 (SRI 81.1)



CB-20 (SRI 79.9)





Target, Atlanta, GA

C-30 (SRI 93.2)



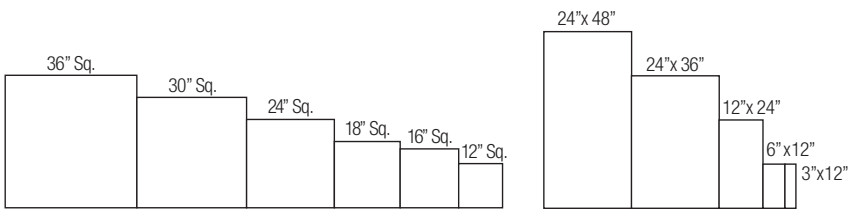
C-40 (SRI 92.2)



C-50 (SRI 87.1)



WAUSAU Washed Glass PAVERS



Wausau Washed Glass pavers are available in these sizes, in modular patterns and plank style pavers. Custom sizes available. Standard Thickness = 2" - 2.75"

Wausau Washed Glass Pavers are shown in five colors. Custom colors available.

WG-10



WG-20



WG-30



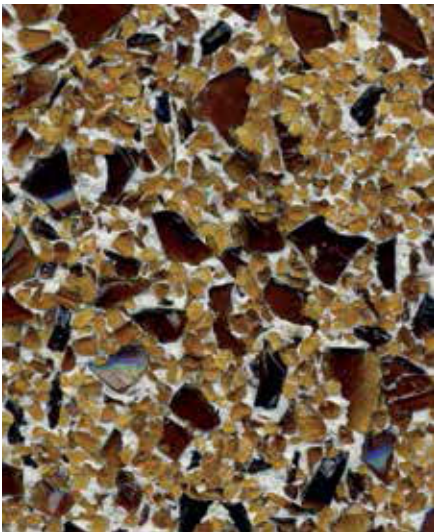


Syracuse University, Syracuse, NY

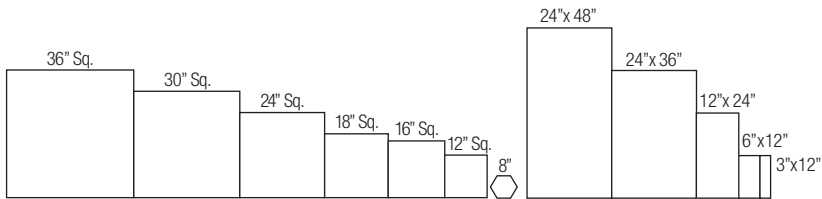
WG-40



WG-50



WAUSAU Blasted Glass PAVERS



Wausau Blasted Glass pavers are available in these sizes, in modular patterns and plank style pavers. Custom sizes available. Standard Thickness = 2" - 2.75"

Wausau Blasted Glass Pavers are shown in five colors. Custom colors available.

BG-10



BG-20



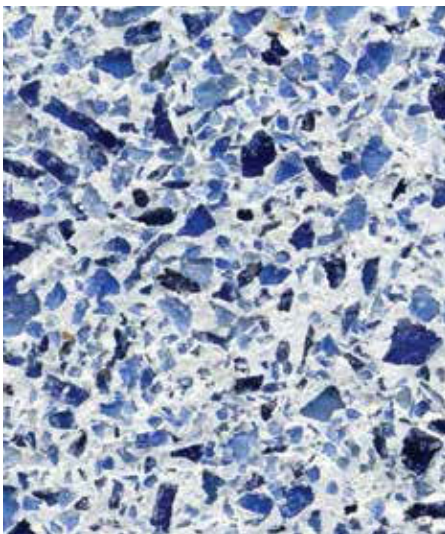
BG-30





South Los Angeles City Hall, Los Angeles, CA

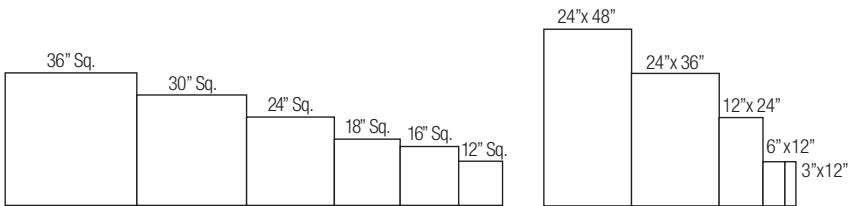
BG-40



BG-50



WAUSAU Ballast PAVERS



Wausau Ballast pavers are available in these sizes, and in modular patterns. "Quik Ship" items are stocked in 24" squares (2" thick) and ship within 15 business days, based on availability. Standard Thickness = 2" - 2.75"

Wausau Ballast Pavers are shown in four colors. Custom colors available.

B-10 





Coloplast, Minneapolis, MN

B-20 



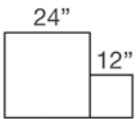
B-30 



B-40 



WAUSAU Detectable Warning PAVERS



Wausau Detectable Warning pavers are available in 12" and 24" squares. Custom sizes available. "Quik Ship" items are stocked in 12" squares (2" thick) and ship within 15 business days based on availability. Standard Thickness = 2" - 2.75"

Wausau Detectable

Warning Pavers are shown in twelve colors and five patterns (pages 36-39). Custom colors available. Wausau Detectable Warning Pavers are also available with a flat finish.

ADA-2 Pavers are State of California Title 24 compliant.

A-10



A-20



A-30



Tactile Warning



Directional Bar



Available Patterns:

ADA-1



ADA-2



A-40 (33538 Federal Yellow)

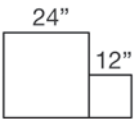


ADA-3





WAUSAU Detectable Warning PAVERS



Wausau Detectable Warning pavers are available in 12" and 24" squares. Custom sizes available. "Quik Ship" items are stocked in 12" squares (2" thick) and ship within 15 business days based on availability. Standard Thickness = 2" - 2.75"

Wausau Detectable

Warning Pavers are shown in twelve colors and five patterns (pages 36-39). Custom colors available. Wausau Detectable Warning Pavers are also available with a flat finish.

ADA-2 Pavers are State of California Title 24 compliant.

A-50 



A-60 



A-70 



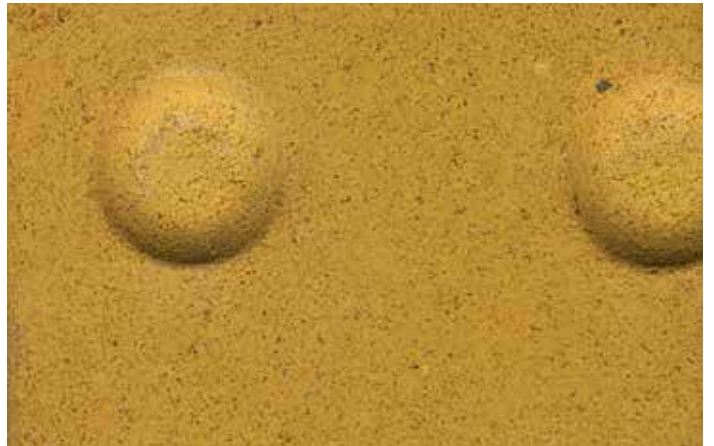
A-120

QUIK
SHIP



A-110

QUIK
SHIP



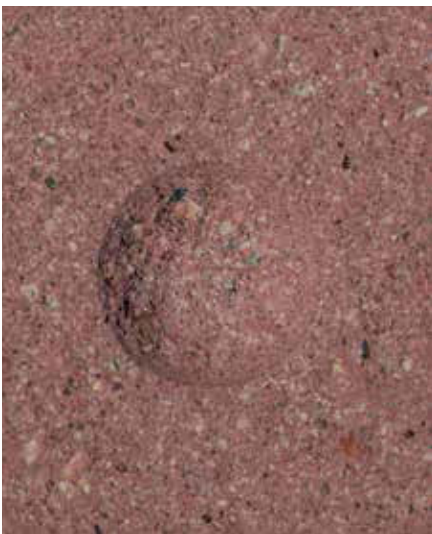
A-100

QUIK
SHIP



A-80

QUIK
SHIP



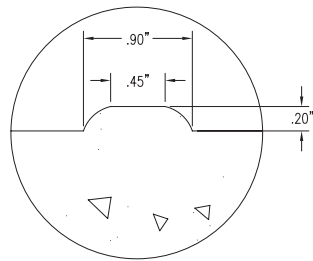
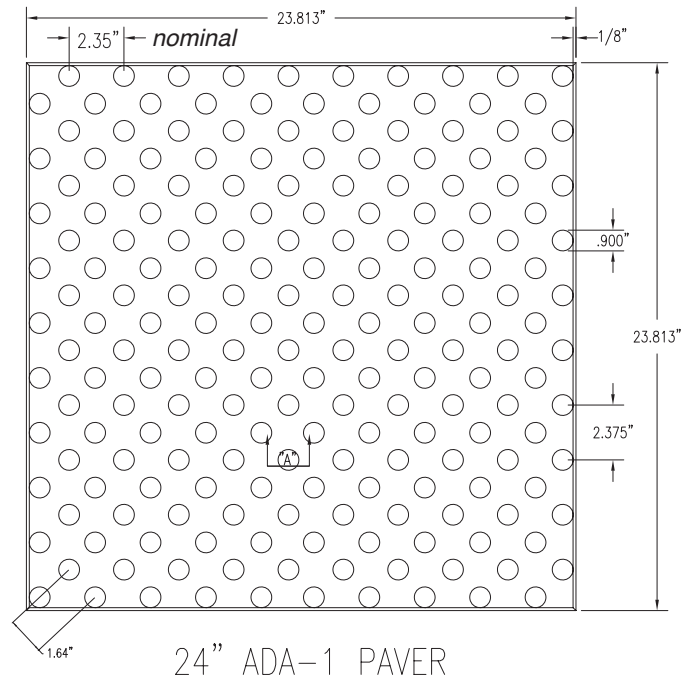
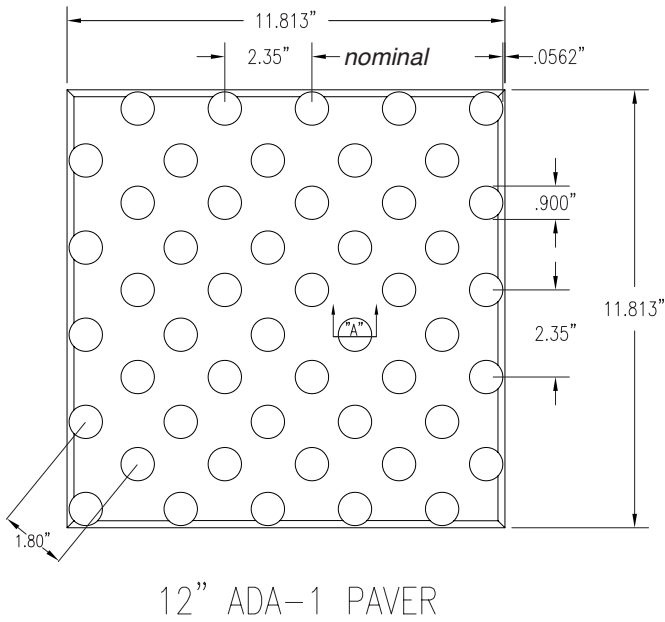
A-90

QUIK
SHIP

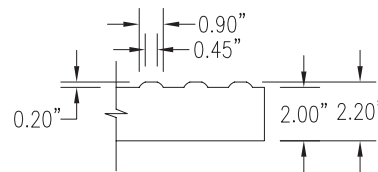


Detectable Warning Paver Designs and Patterns

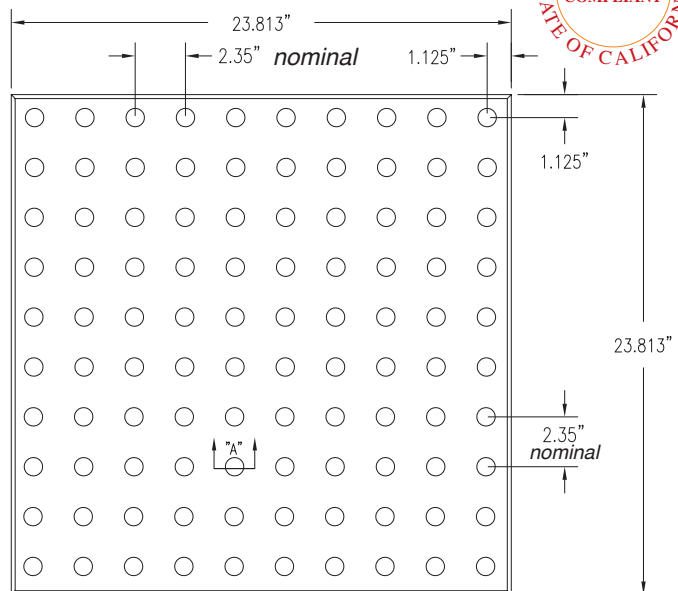
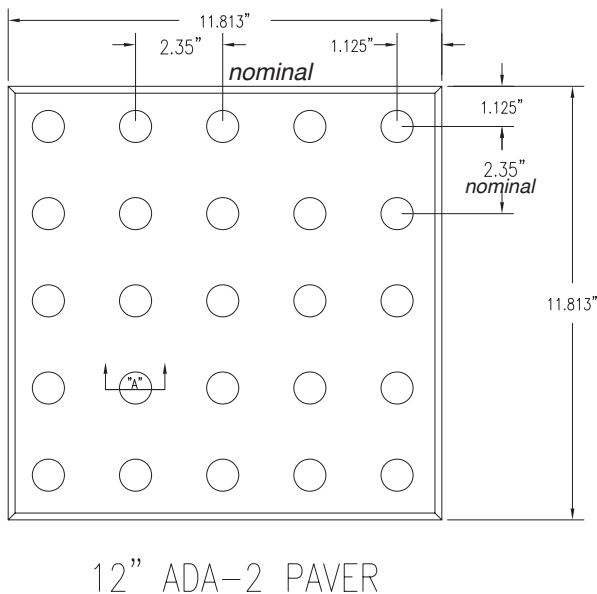
ADA-1 Staggered Pattern



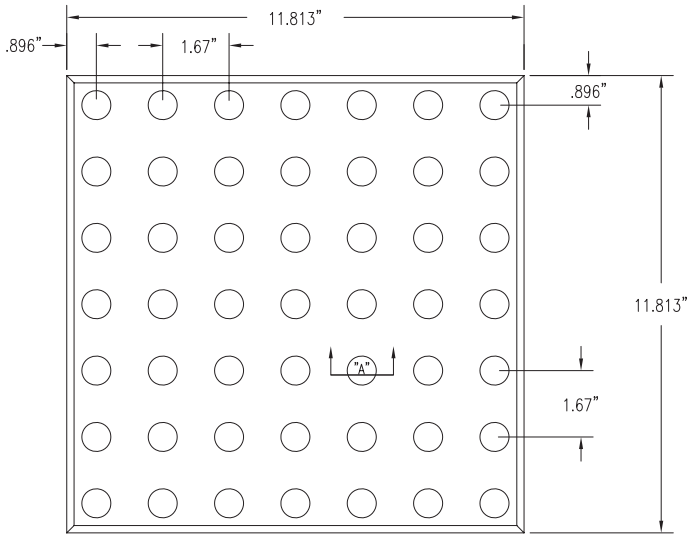
DETAIL 'A'
WARNING DOME DETAIL



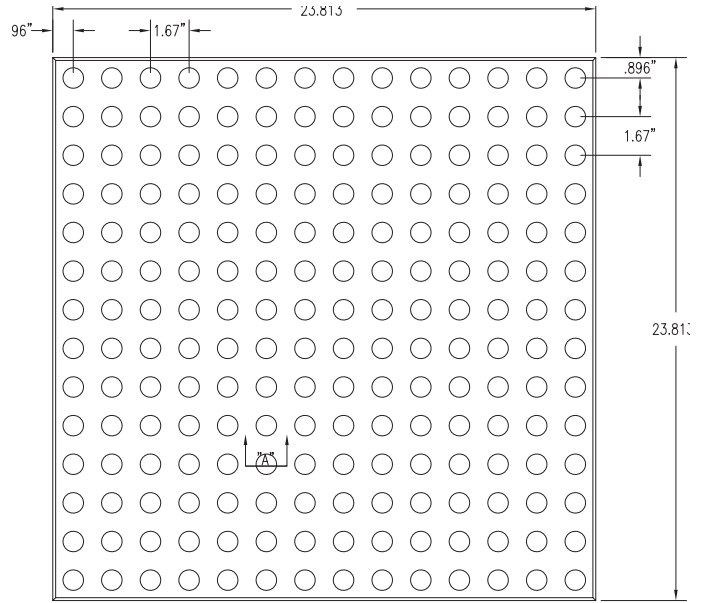
ADA-2 Straight Row 2.35" Spacing Pattern



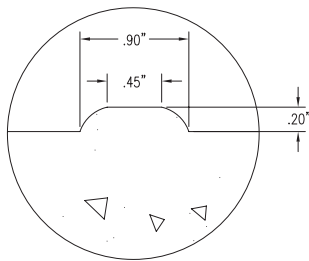
Detectable Warning Straight Row 1.67" Spacing Pattern



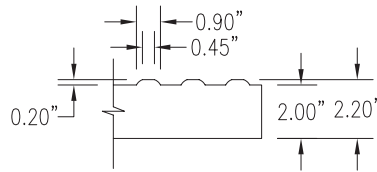
12" ADA-3 PAVER



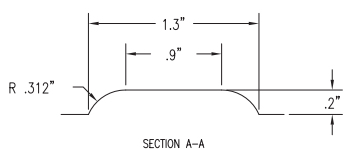
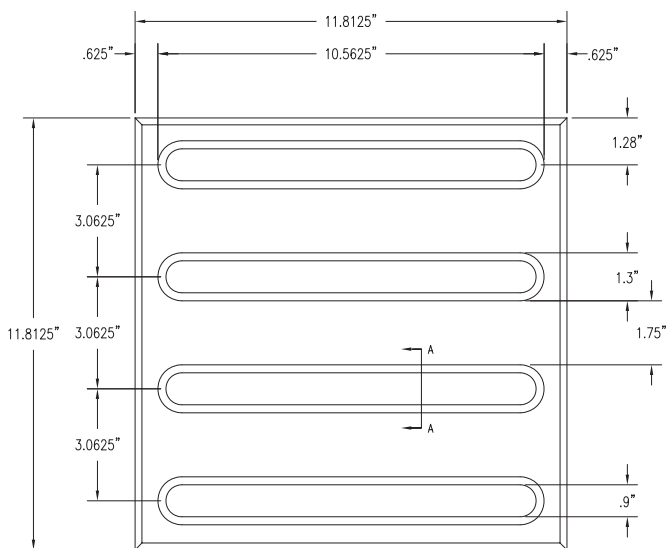
24" ADA-3 PAVER



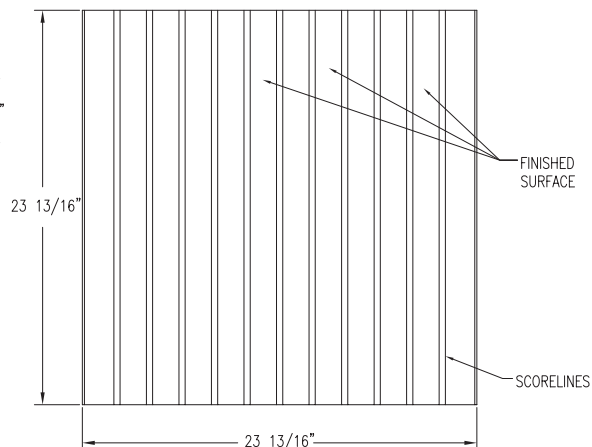
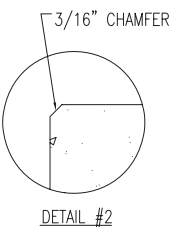
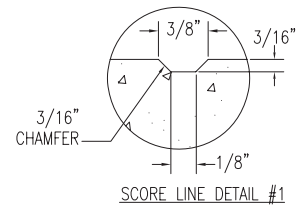
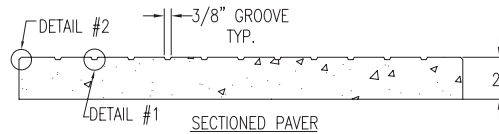
DETAIL 'A'
WARNING DOME DETAIL



Directional Bar Pattern



Tactile Warning Pattern



* Details available for download at www.wausaupaving.com

Detectable Warning Paver Installation Guide with Wausau Tile's Reusable Block-Out Frame



1) Prepare area to receive concrete and detectable warning pavers.



2) Drive in rebar to the approximate height to receive Wausau Tile's block out frame. The frame work has small feet to help locate where rebar should be located.



3) Set block-out frame so rebar sits inside the frame legs.



4) Set block-out frame to final grade by tapping on frame work.



5) Pour concrete into and around frame work. Level concrete and bull float area.



6) Level concrete with a straight edge inside of the frame work- adding concrete as needed. Note: Standard frame designed for 2" thick paver.



7) Pull out frame. Bull float area to receive detectable warning pavers.



8) Allow concrete to cure. Use the following guidelines based on installation method. Note: If using wet set, do not allow concrete to cure.

Detectable Warning Guide for Sand Set Installation with Wausau Tile's Reusable Block-Out Frame



Step #1 - **Sand Set** Installation - Create weep holes for drainage. Core drill hole once concrete has set or, while concrete is still wet, make a hole with pipe.



Step #2 - **Sand Set** Installation - Add masonry sand to recessed area.



Step #3 - **Sand Set** Installation - Screed 1/4" masonry sand.



Step #4 - **Sand Set** Installation - Set pavers in sand. Leave 1/16" to 1/8" between units to allow for sand.



Step #5 - **Sand Set** Installation - Sweep sand into joints after installation.



Complete.

Extension Block Out-Frame
12" x 24"



Main Block Out-Frame
24" x 36"

12" Standard Blok-handle
24" Also Available



Detectable Warning Paver Guide for Thin Set Installation with Wausau Tile's Reusable Block-Out Frame



Step #1 - **Thin Set** Installation - Apply thin set with 1/4" x 3/8" notched trowel. Exterior grade.



Step #2 - **Thin Set** Installation - Spread fully and evenly.



Step #3 - **Thin Set** Installation - Set pavers. Be sure pavers are fully set into thinset. (Back buttering may be necessary).



Step #4 - **Thin Set** Installation - Grout all joints with an exterior based grout or caulk. Complete.

Detectable Warning Paver Guide for Wet Set Installation with Wausau Tile's Reusable Block-Out Frame



Step #1 - **Wet Set** Installation - While concrete is still wet, embed pavers into cavity.



Step #2 - **Wet Set** Installation - Level pavers by tapping with rubber hammer. Note: Joints may or may not be grouted; contractor option.



Complete.

Wausau Pavers Physical Properties

Property	Value	Test Method	Property	Value	Test Method
Compressive Strength	=>8,000 psi avg.	ASTM C140	Freeze-Thaw	=< 0.5% loss of dry weight (50 cycles)*	C-1262
Flexural Strength	=>700 psi	ASTM C293			
Water Absorption	< 5%	ASTM C140	Center Load	1,850 lbs.	WTCL 99

Weight: 24-33 lbs/sf • Dimensional Tolerance: +/- 1/16" (Length, width, height, convex, concave)
 *28 day test results based on nominal 24" Sq. x 2" thick material and our standard mix designs



Above Left:
Testing Flexural Strength

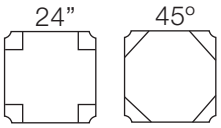
Above Right:
Testing Compressive Strength

Left:
Testing Center Load Capacity

**In-House
Testing Facility**

**Every job is
tested before
it leaves.**

WAUSAU Lok-Down SYSTEM



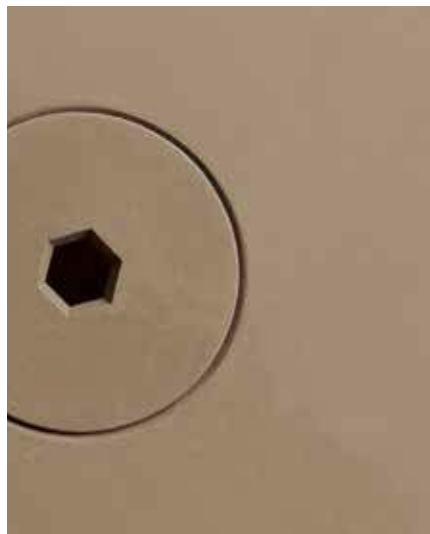
Wausau Lok-Down pavers are available in standard 24" and 30" squares. Thickness = 2"
Wausau Tile's exclusive wind uplift data is based on 24" Sq. x 2" thick pavers only.

Wausau Lok-Down pavers are designed for high-wind conditions. The system is adaptable to any Wausau paver in 24" and 30" squares, custom sizes are available. Lok-Down assembly is available in standard square and **NEW** 45° and in any of the colors below or in special order white.

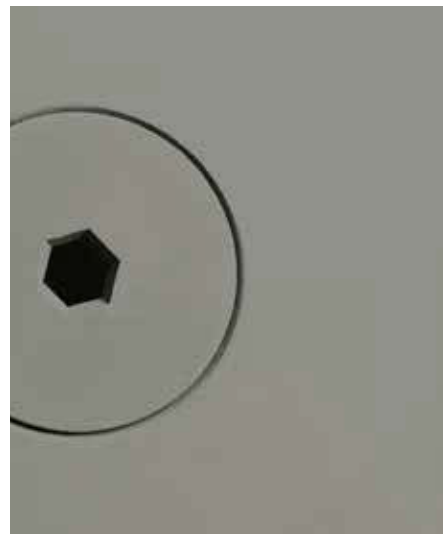
LD-10 (Cream)



LD-20 (Tan)



LD-30 (Gray)



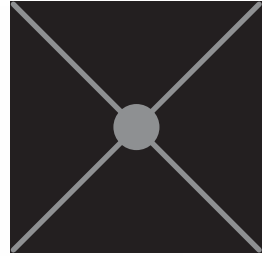
Standard Square Top Plate



Screw Lengths
2" - 2 3/4"



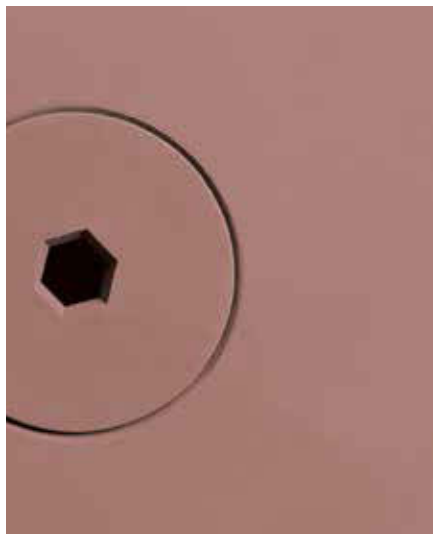
NEW 45° Top Plate



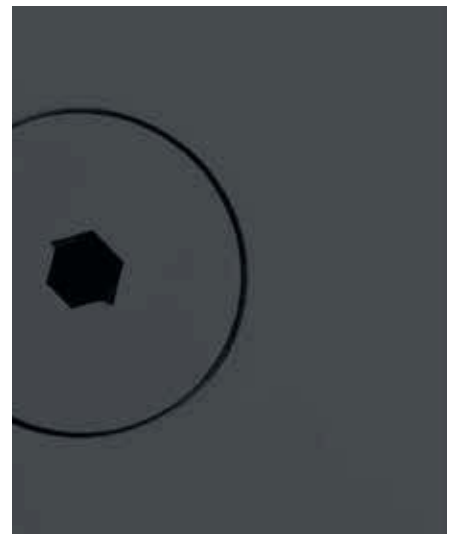
LD-40 (Brown)



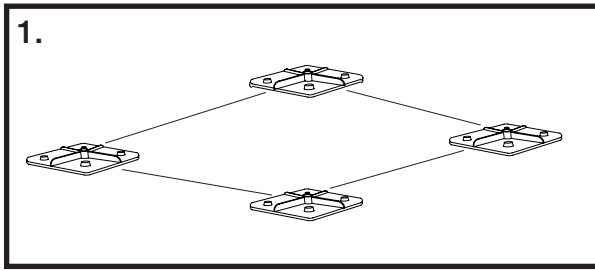
LD-50 (Red)



LD-60 (Black)



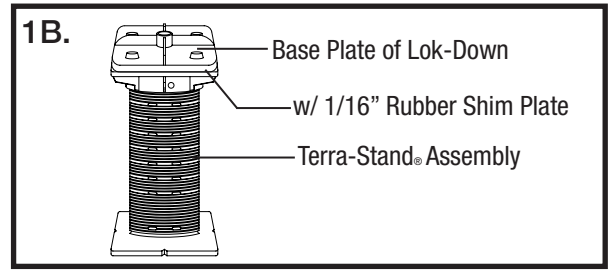
LOK-DOWN INSTRUCTIONS



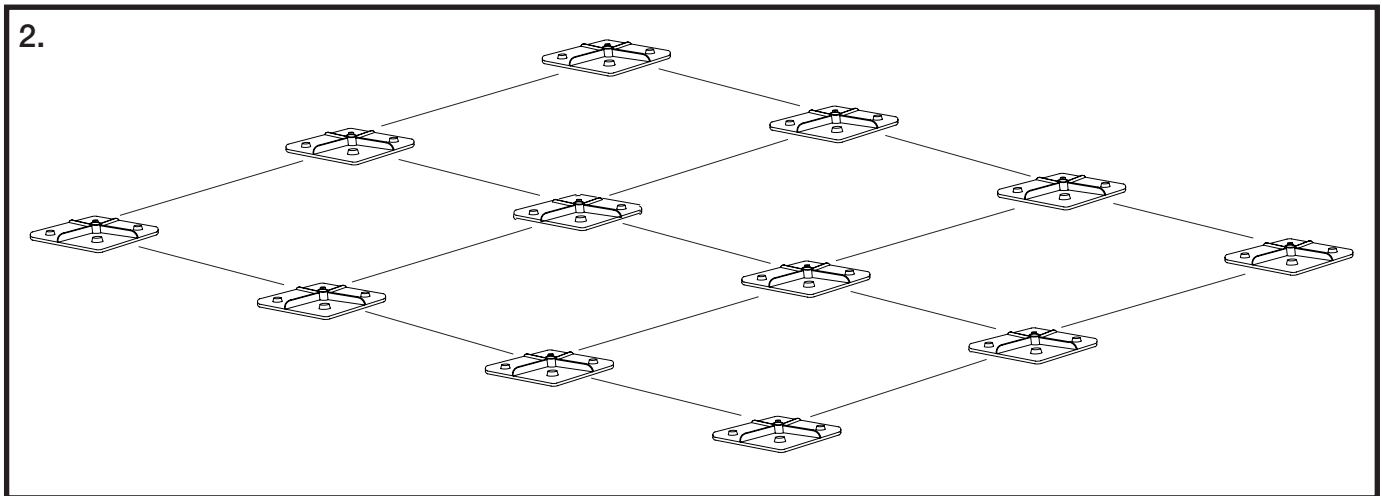
1.

Set Grid Marks and Lok-Downs.

(Note: If using a Terra-Stand® set pedestal first. Follow Terra-Stand® Installation Instructions.)



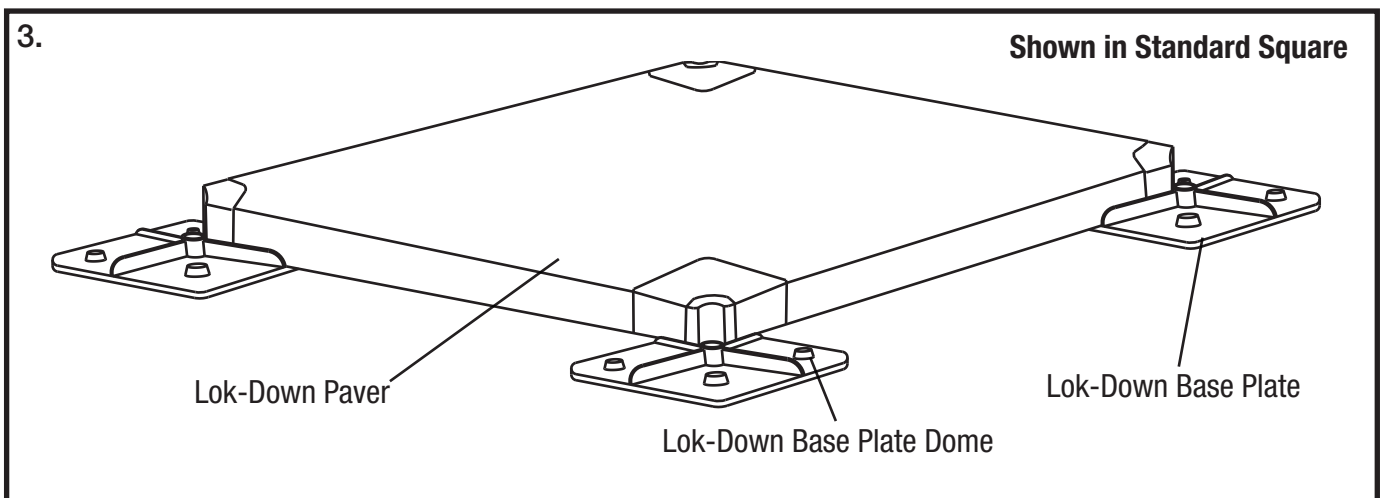
Assembly of the Terra-Stand® with the base of Lok-Down on the top of the pedestal with rubber shim plate. **See Terra-Stand® guide for pedestal assembly.**



2.

Set Balance of Lok-Down Base Plates.

(Note: If using Terra-Stands®, set Lok-Down base units on shims and pedestal tops.)

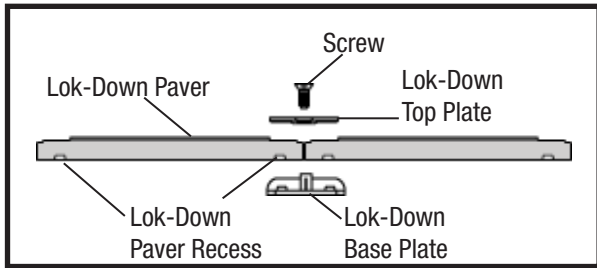


3.

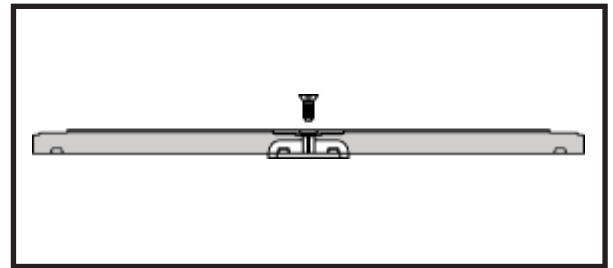
Shown in Standard Square

Set Lok-Down Pavers on the base plates. Be sure to align recess on back side of paver with the domes on the Lok-Down base plate.

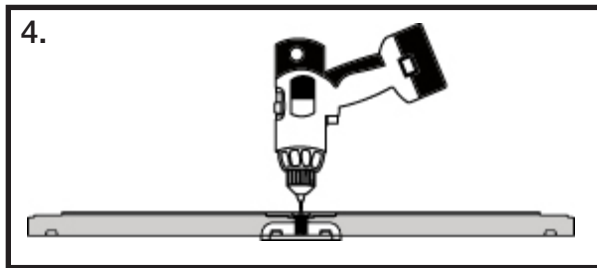
LOK-DOWN INSTRUCTIONS



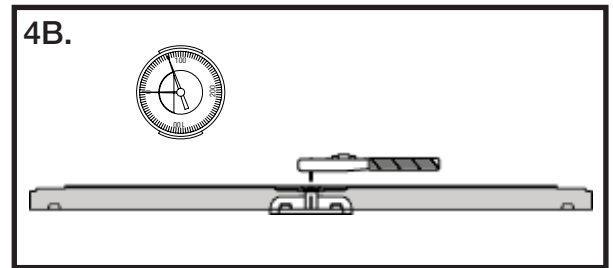
Complete Lok-Down System Model



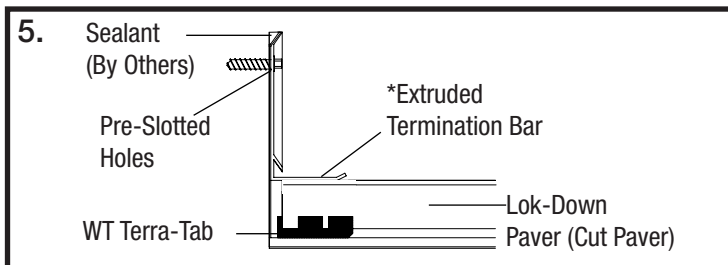
Model of the Lok-Down base plate and top plate in place ready to be screwed down.



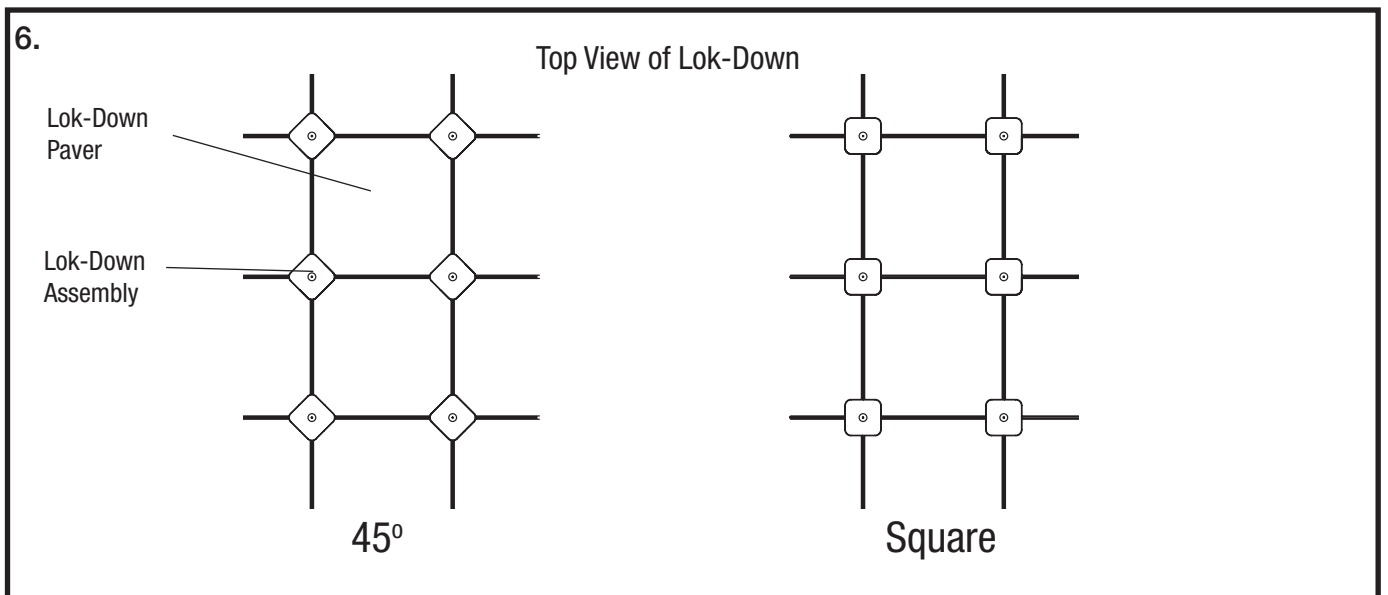
4. Install Screw into Lok-Down with a Hex bit. Tighten down to 70 ft - pounds maximum. Do not over tighten.



4B. Check after tightening screw that it has a maximum 70 ft - pounds rating with a torque wrench. Top cap of Lok-Down to be flush with paver surface.



*Install Paver Termination Bar along wall. Termination Bar (supplied by others)





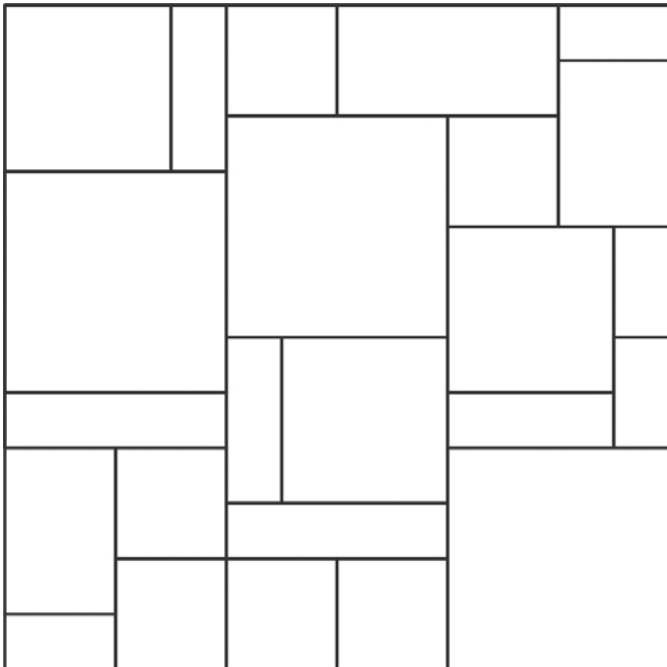
WAUSAU Modular PATTERNS

Wausau Modular Patterns
pavers are available in all
colors and finishes. Details
shown are sectional only.

West Point Academy, West Point, NY

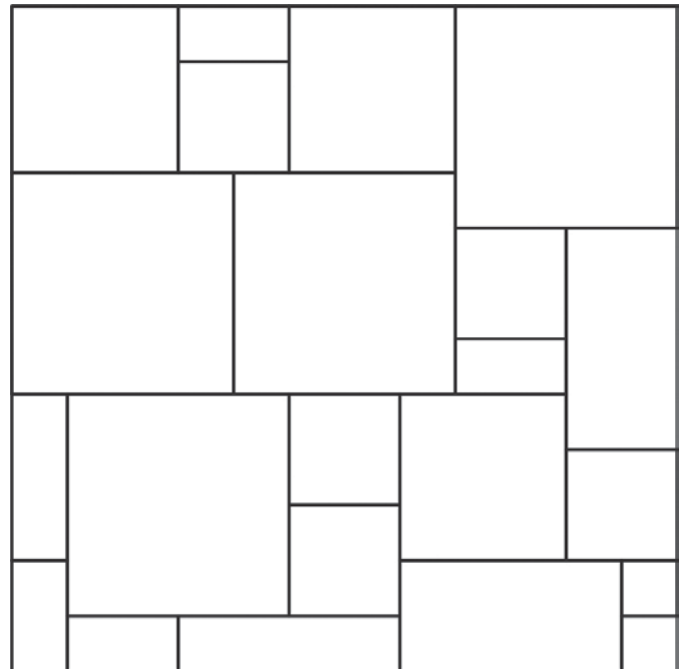
MOD-1

12, 18, 24 sq, 6 x 18, 6 x 24 and 12 x 24 inches



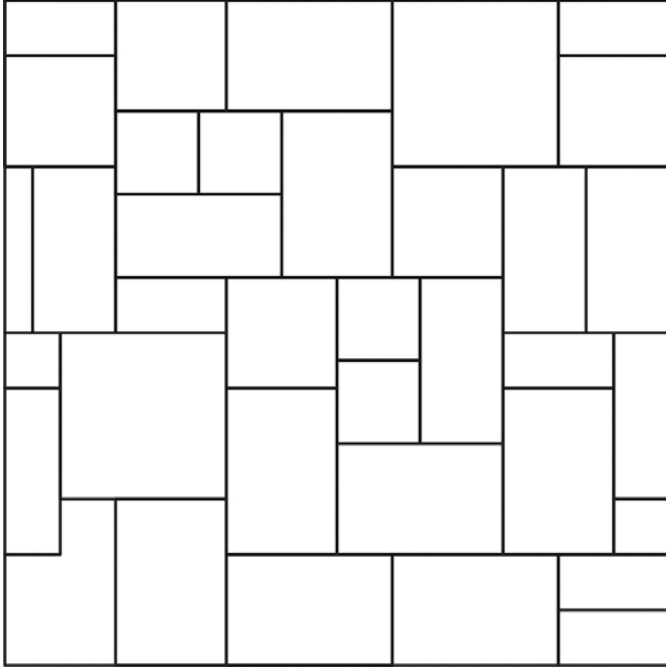
MOD-2

6, 12, 18, 24 sq and 6 x 12 inches



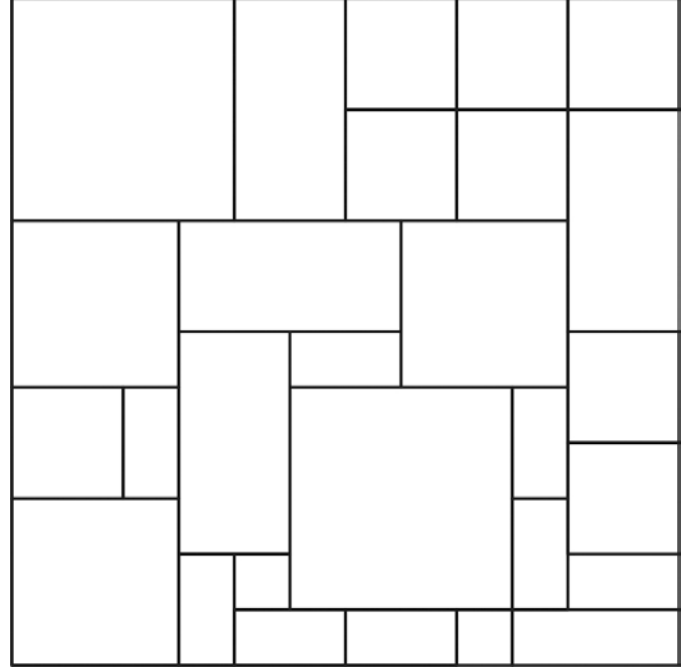
MOD-3

6, 9, 12, 18 sq, 6 x 12, 9 x 18 and 12 x 18 inches



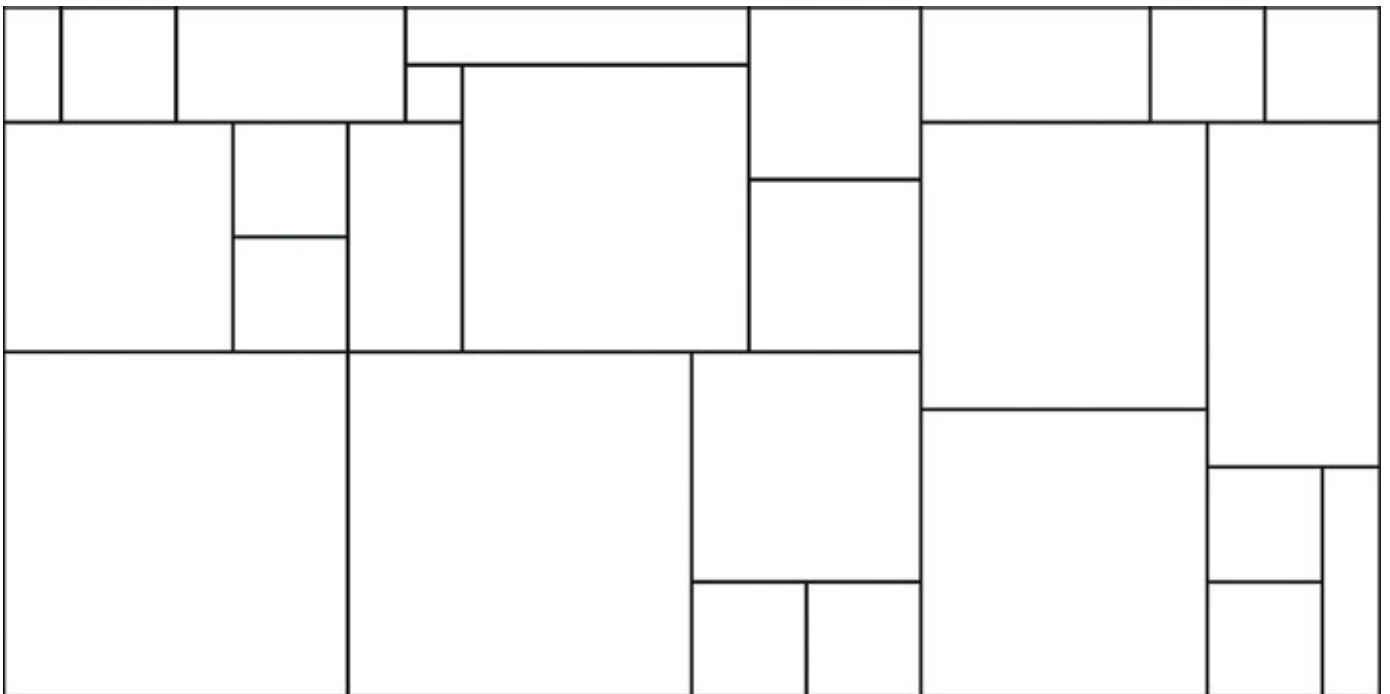
MOD-4

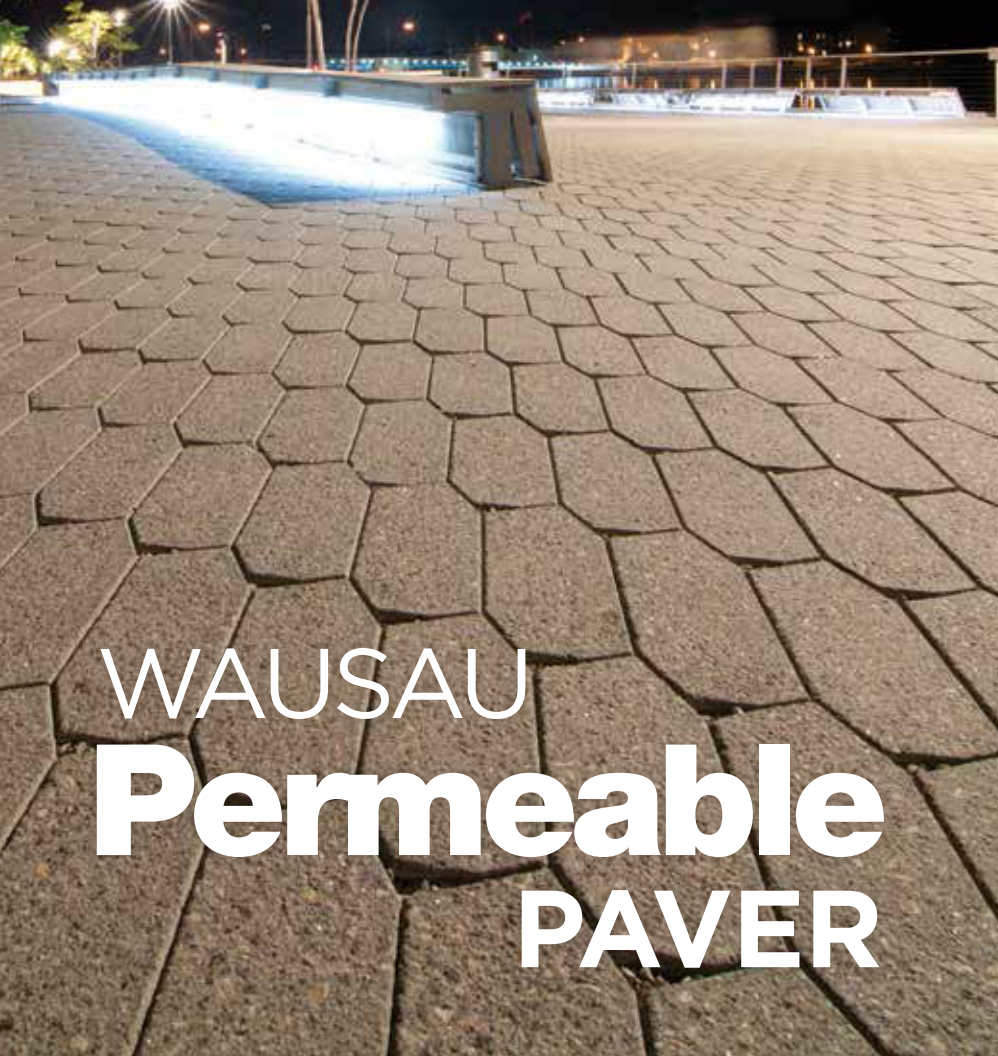
6, 12, 18, 24 sq, 6 x 12 and 12 x 24 inches



MOD-5

6, 12, 18, 24, 30, 36 sq and 6 x 12 inches

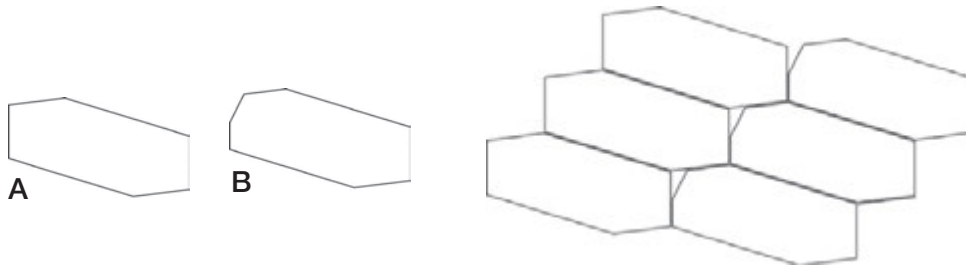




WAUSAU Permeable PAVER

Wausau Permeable Pavers-2 are designed using both A and B and are available in many colors and finishes, except ADA patterns.

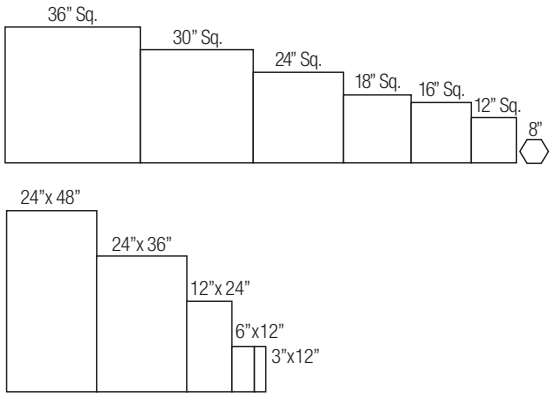
City Walk, Green Bay, Wisconsin



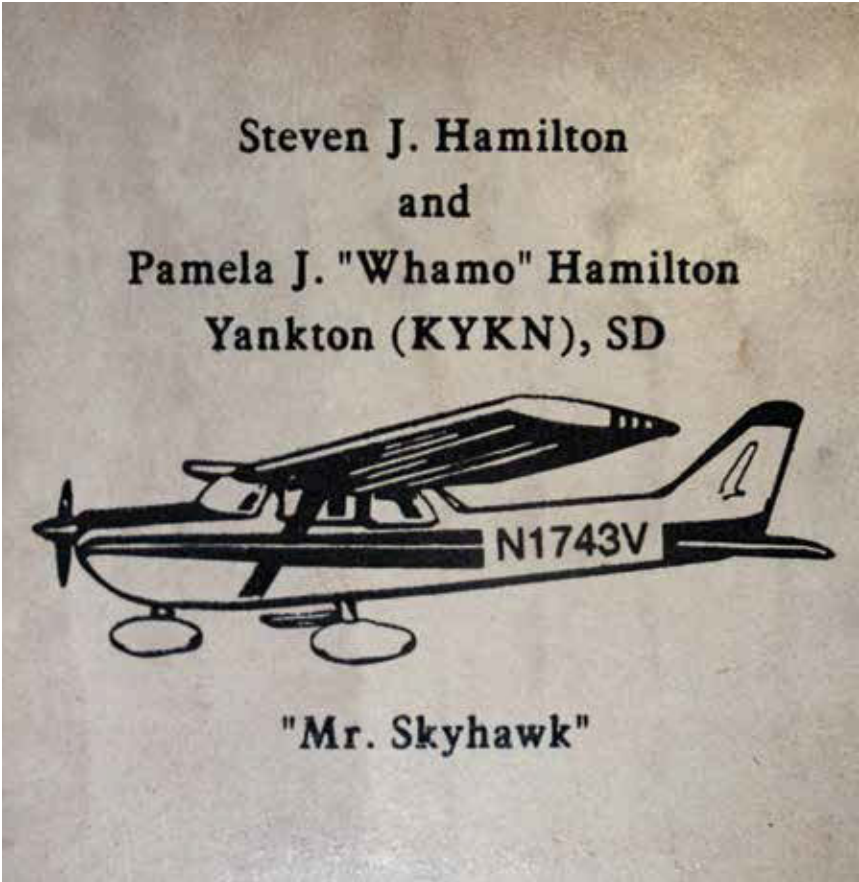
Wausau Permeable Pavers are approximately 14" in length, Thickness = 2.375" - 2.75"

WAUSAU Engraved PAVERS

Wausau Engraved Pavers carry your custom lettering and artwork. Engraving is epoxy filled. Available in select architectural precast pavers.



Wausau Engraved pavers are available in these sizes and plank style pavers. Custom sizes available. Standard Thickness = 2" - 2.75"



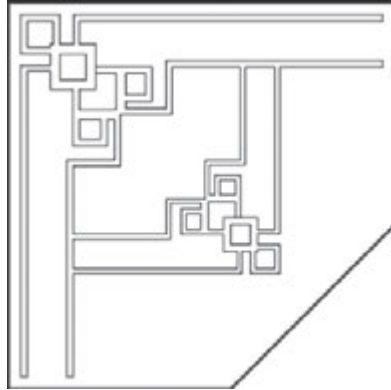
WAUSAU Accent PAVERS

Wausau Accent Pavers can be custom designed in any standard size. All surfaces can be produced in all colors. Custom colors available. Customers may also choose from special patterns already created by Wausau Tile.

P-10



P-20



P-30



P-40 (broom)



P-50 (wood grain)



P-60 (slate)



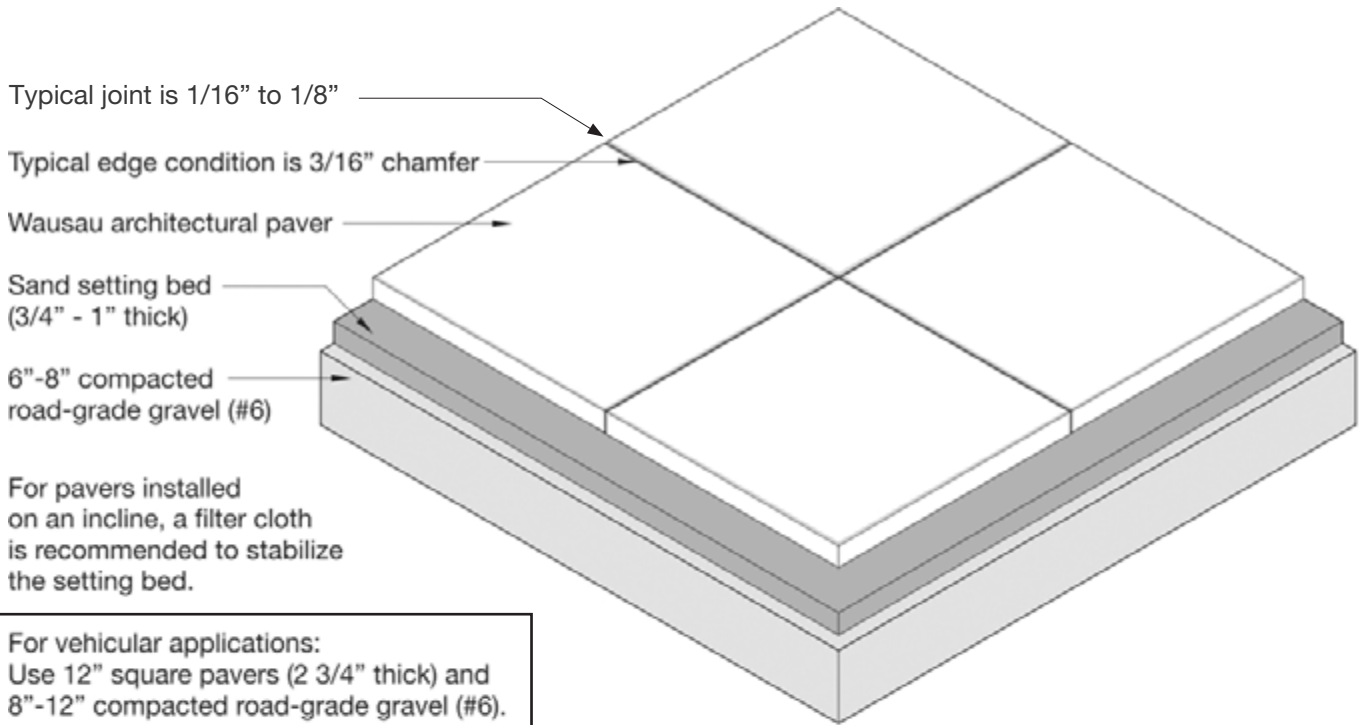


Old Town Streetscape, Chicago, Illinois

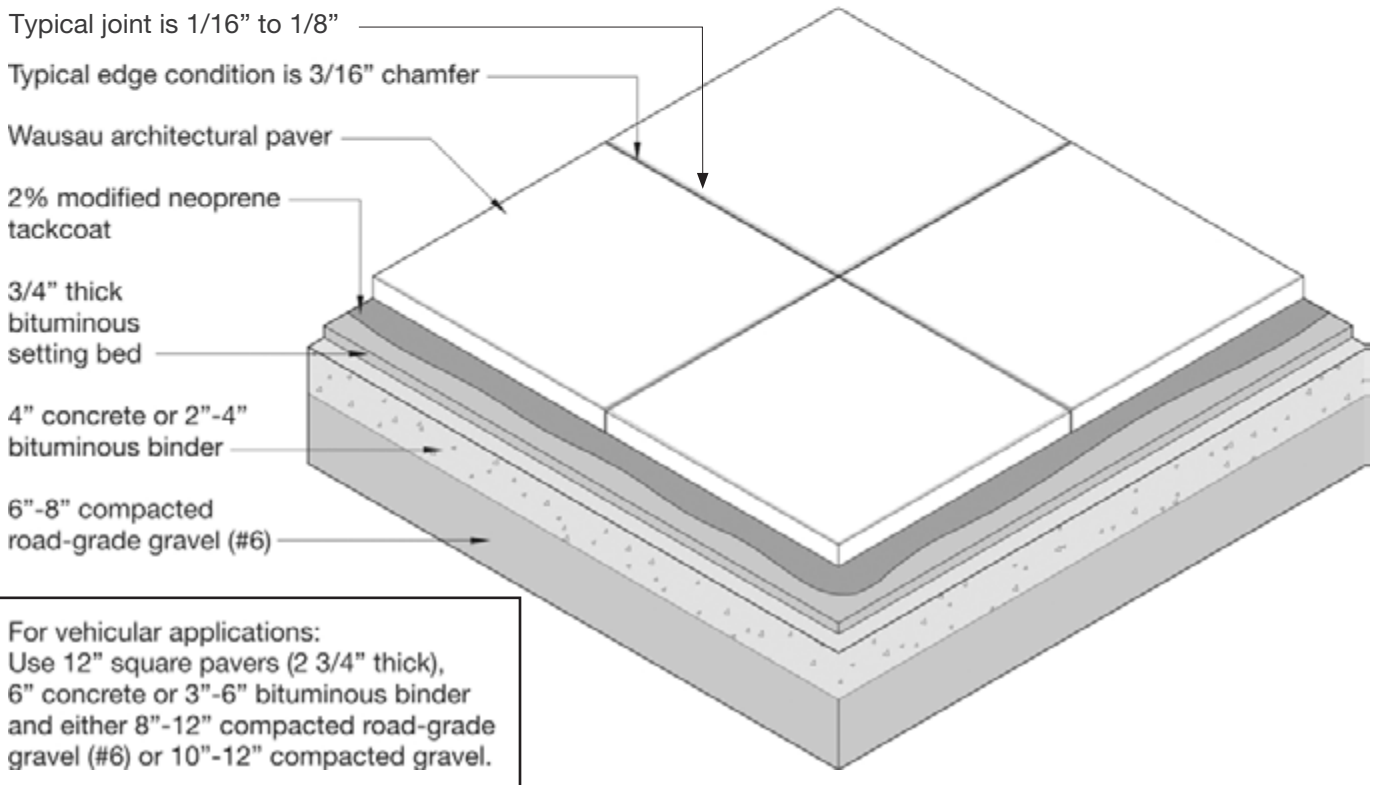


The most economical method for installing architectural pavers is sand setting. It also allows for easy replacement, repair and adjustment. Sand-set installation can be used where soils are well drained and settling is not expected. Proper compaction of the setting bed and the gravel sub-bed is mandatory. For stability, the sand bed should be no thicker than one inch. Joints should be 1/16" to 1/8", and filled with swept sand. Perimeter restraint is recommended. Bituminous installation is indicated where greater stability is required.

Wausau Sand-Set Installation



Wausau Bituminous Installation



Wausau Tab Installation

Typical joint is 1/16" to 1/8"

Typical edge condition is 3/16" chamfer

Wausau architectural paver

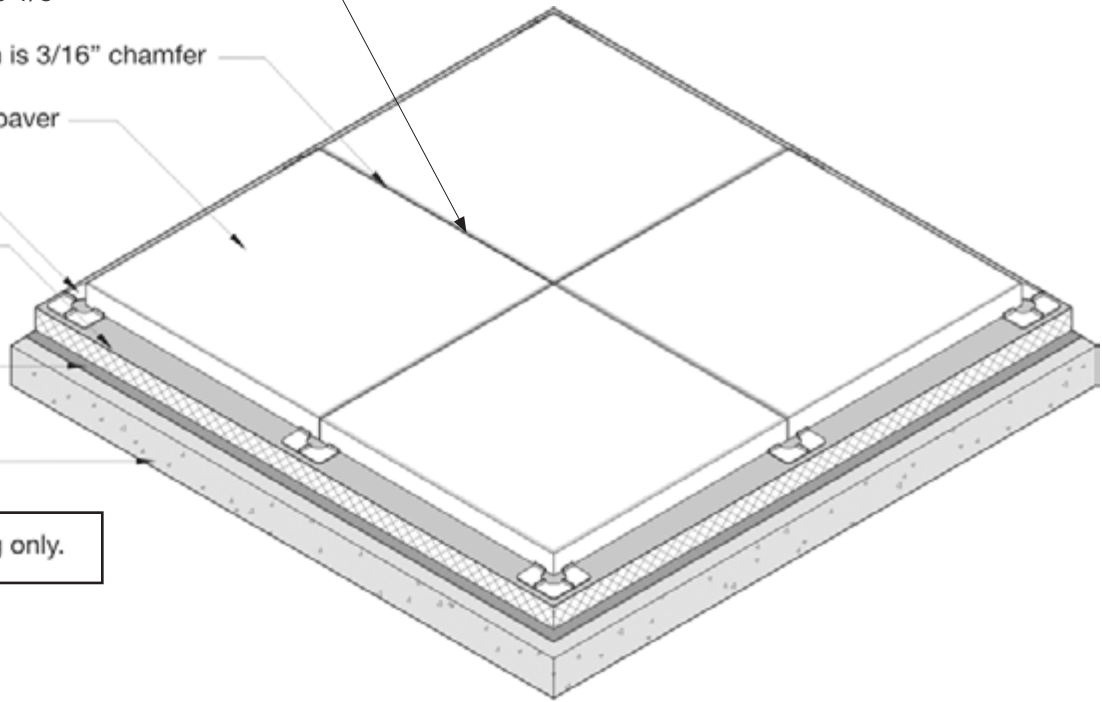
Tab

60 psi min. insulation
or protection board
(optional)

Waterproof
membrane

Structural base

For pedestrian loading only.



Wausau Pedestal Installation

Typical joint is 1/16" to 1/8"

Wausau architectural paver

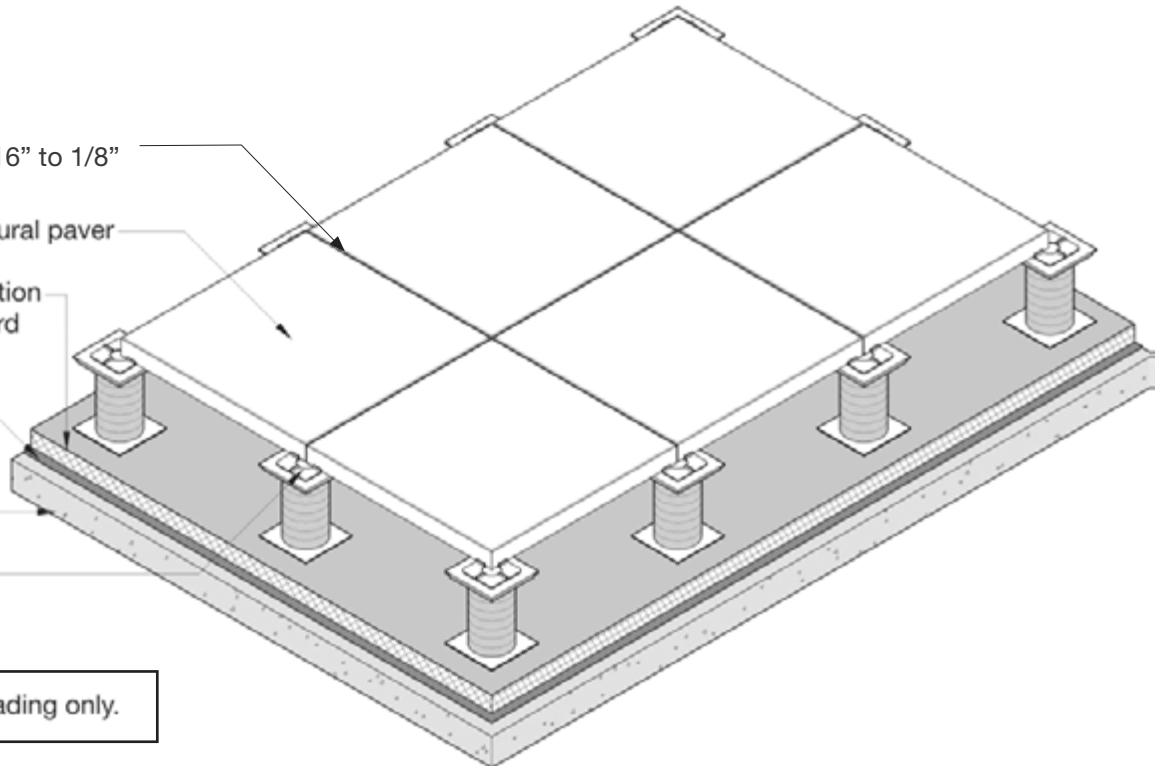
60 psi min. insulation
or protection board
(optional)

Waterproof
membrane

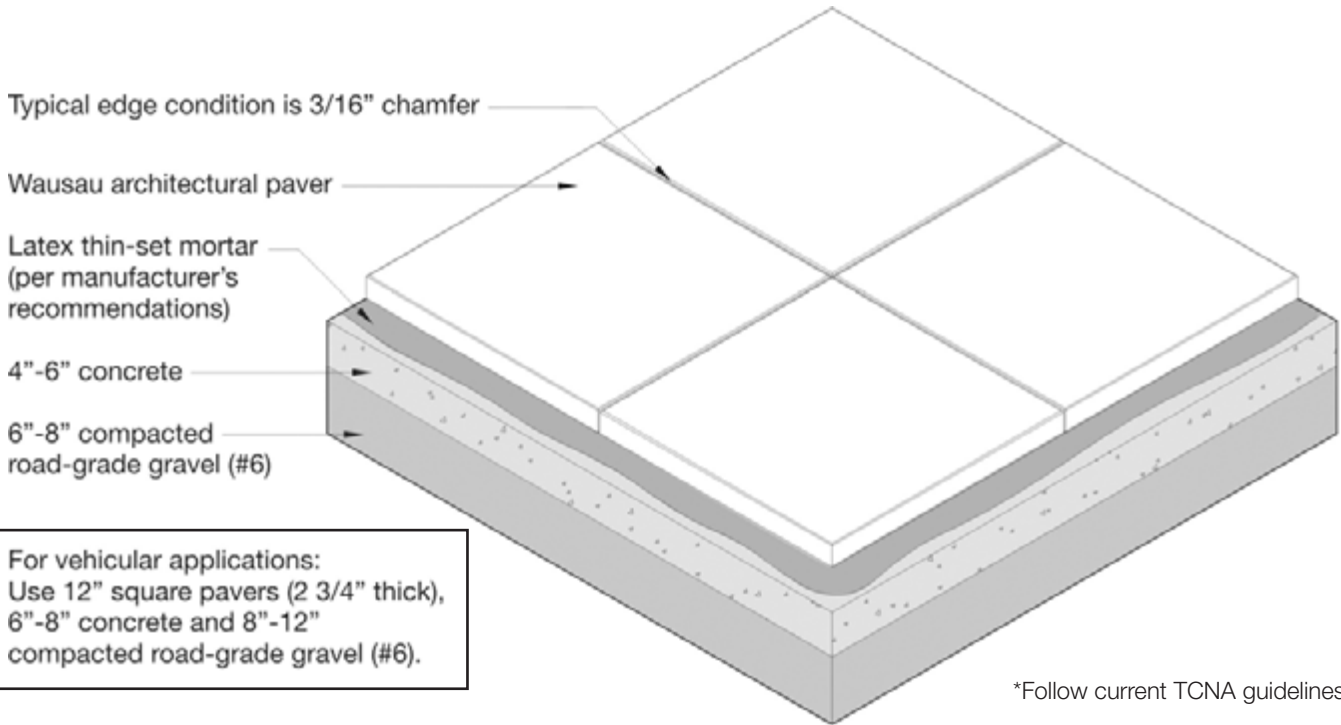
Structural base

Tab on pedestal
system or waffle
reducer

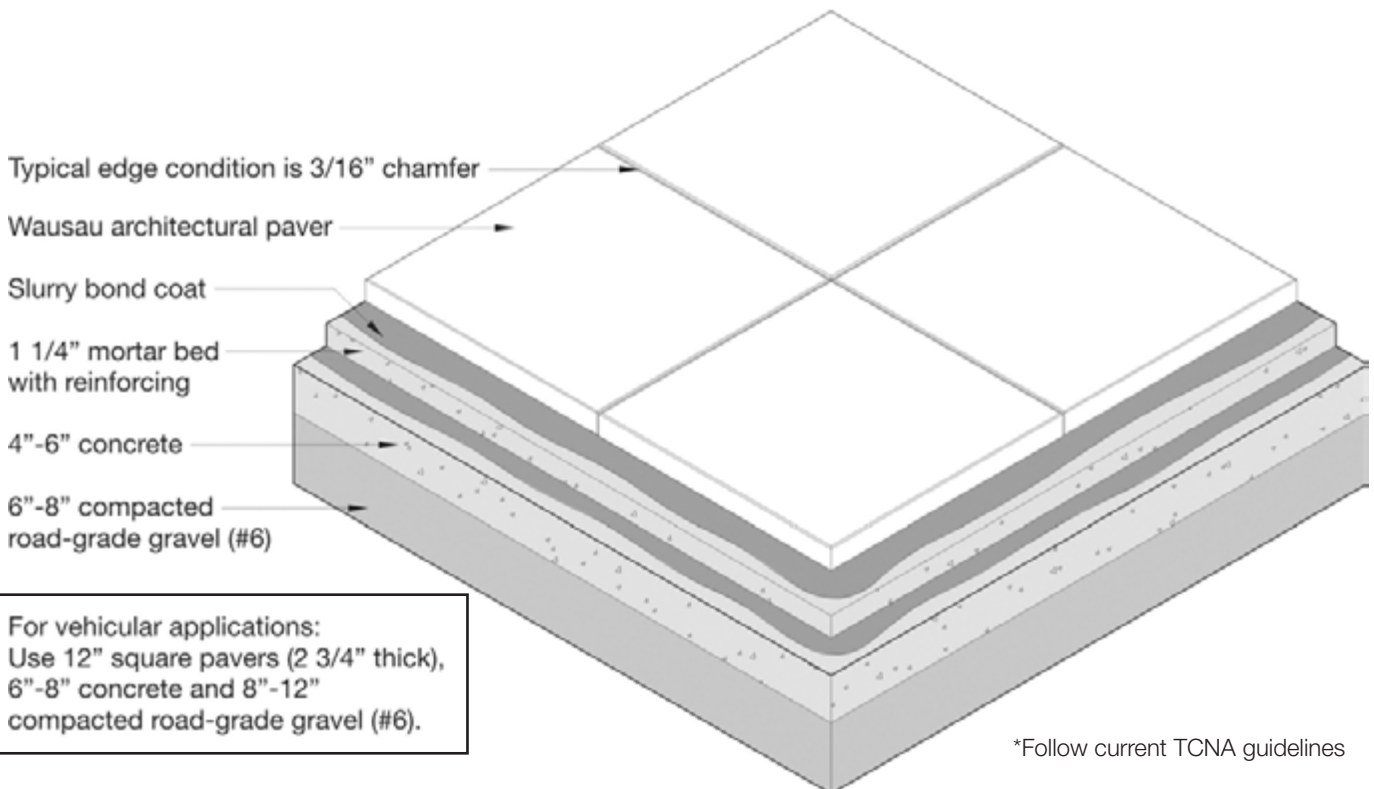
For pedestrian loading only.



Wausau Mortar Thin-Set Installation



Wausau Mortar Thick-Set Installation





Installation

Wausau Terra-Stand® Pedestal



The Wausau pedestal system provides height adjustment from 3/8" to 21". Slopes up to 5/8" per foot are allowed. Maximum load per pedestal is 3,000 pounds.





Monona Terrace, Madison, Wisconsin

Spacers



Available in 1/8", 3/16" and 1/4" sizes

Waffle-Reducer



Thicknesses from 1/2" - 2 3/4"

Tabs

Available in 5", 6" and 7" squares with 3/16" or 1/8" joint spacing.



Shims



Available in 1/16", 1/8", 1/4" thickness

Level Installation Using Terra-Stand®



- 1- After establishing your paver grid marks, set Quadrant Pedestals every 8' to 16'. Use a transit or laser level to set height. For cutting and leveling these pedestals, see details 2, 3 and 4.



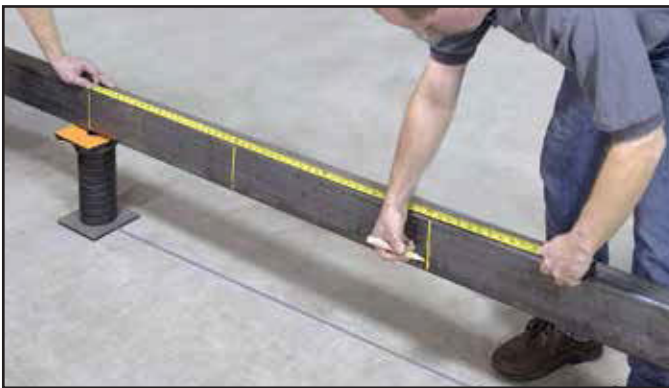
- 2- Cut Terra-Stand core with a chop saw; cut should be made on the perforated cut lines. The open end (top) of the core unit should be cut and discarded.



- 3- Assemble Terra-Stand unit; hand tighten 3/4" nut. Do not over tighten nut. Unit is threaded correctly when core can be seen through the hole in the neck of the top piece. Use pencil to determine if the core is threaded adequately.



- 4- Slide pedestal under laser line or straight-edge placing base grooves on chalk lines. Level top of Terra-Stand, in both directions, with level. Once level, tighten 3/4" nut with socket wrench or core wrench (shown).



- 5- Once quadrant pedestals are set, take a straight-edge that can span the distance between the quadrant pedestals and mark the locations where the center of the intermediate pedestals should be placed.

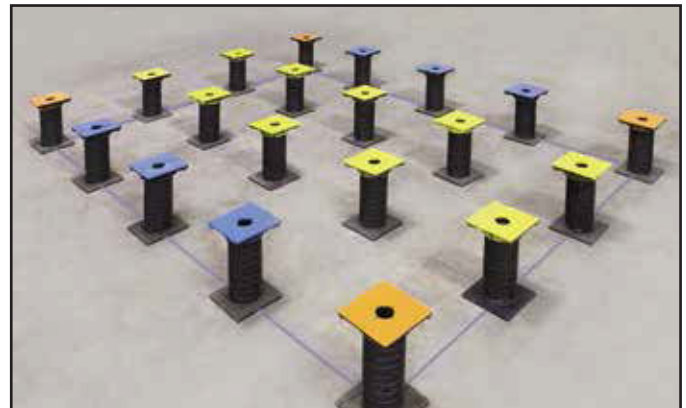


- 6- After the core is cut and the Terra-Stand is assembled (details 2 and 3), slide line course pedestal under the straight-edge and adjust up by turning the top, making full contact with the straight-edge. Once the pedestal is set to height, tighten nut as shown in detail 4.

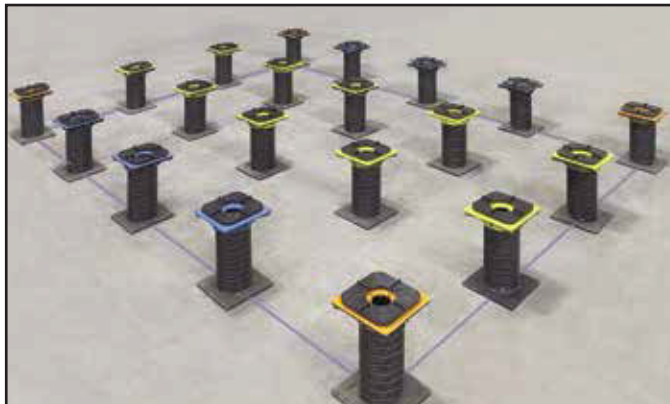
Level Installation Using Terra-Stand®



7- After the Line Course Pedestals are set, you can then install the Stretcher Course Pedestal in the same way as described in details 6 and 7.



8- Fully installed pedestals:
Quadrant Pedestals (Orange)
Line Course Pedestals (Blue)
Stretcher Course Pedestals (Yellow)



9- Set #5 or #6 Terra-Tabs on Terra-Stand where you expect to set pavers for that working day.

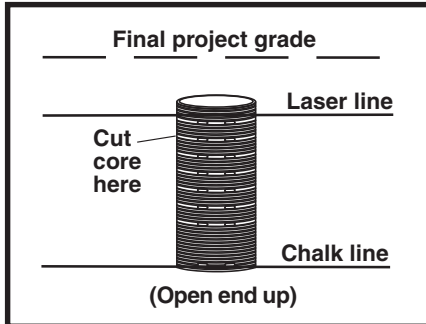


10- Run two or three rows of pavers down the middle of the deck in both directions. Keep pavers straight with laser.

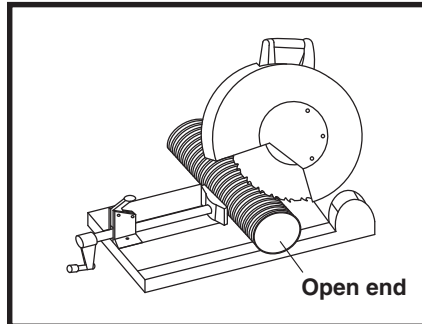


11- Fill in the Quadrants of the deck as shown above with red pavers.

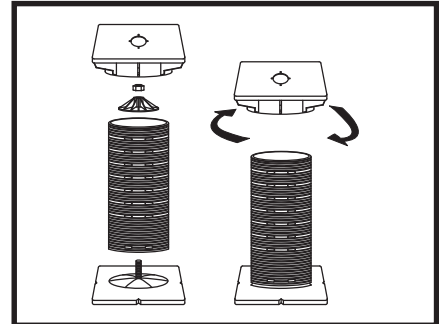
Level Installation Using Terra-Stand®



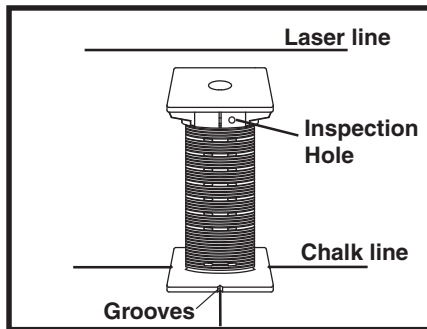
1. Using a laser, determine final height of pedestal. Deduct for tab and base/top assembly. Cut core on the closest perforated cut line under this measurement.



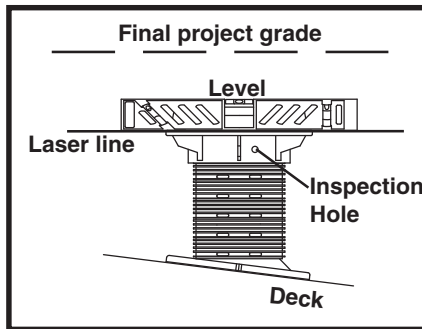
2. Cut Terra-Stand core with a chop saw; Cut off and discard open end.



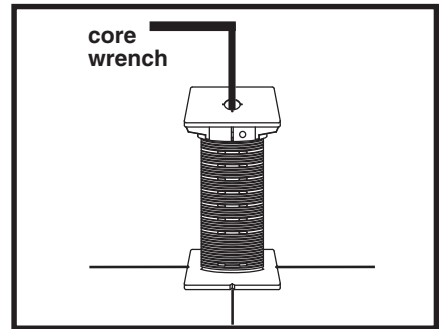
3. Assemble Terra-Stand unit; hand tighten 3/4" nut. (Do not over tighten)



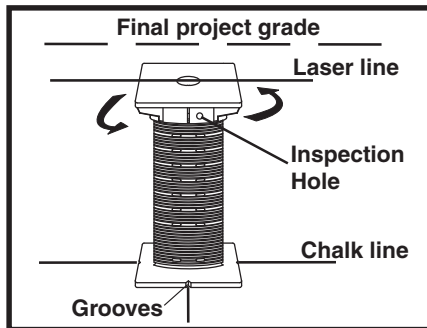
4. Slide pedestal under laser line or straight edge placing base grooves on chalk lines. Check inspection hole for threaded core.



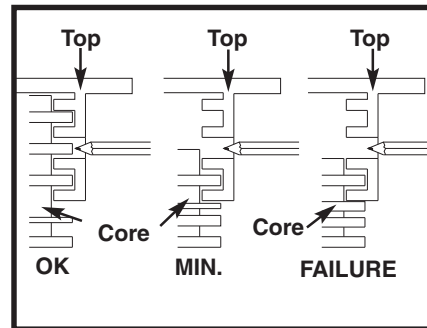
5. Level Terra-Stand in both directions with a carpenter or torpedo level. Be sure threads show in the inspection hole. (see figure 9)



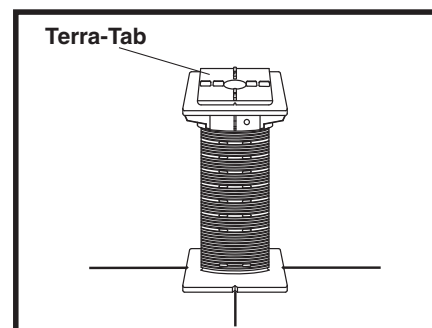
6. Once top is level tighten nut with core wrench or 3/4" socket.



7. Make final adjustments to Terra-Stand as needed. Check inspection hole with pencil/pen to ensure threads are engaged with top. (see figure 9)

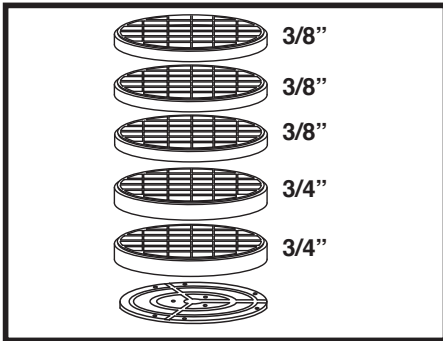


8. Installing contractor to check each Terra-Stand unit to ensure each core and top have enough threads engaged for support.

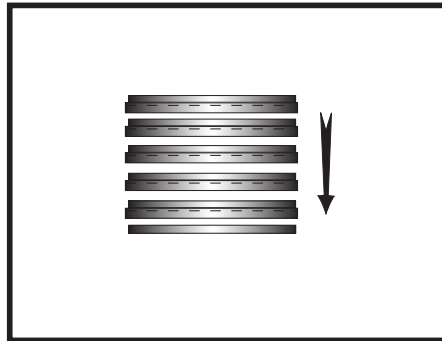


9. Set #5 or #6 Terra Tab on top of the Terra-Stand unit.

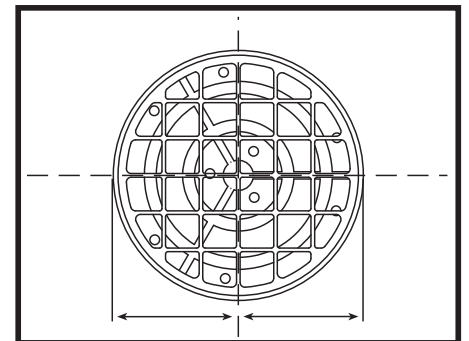
Waffle Reducer Instructions



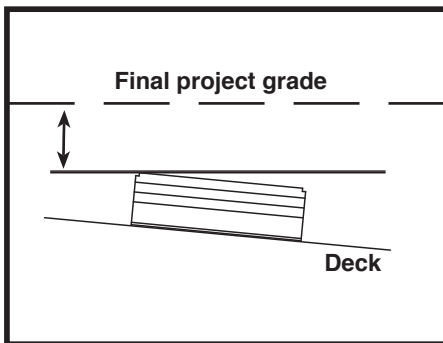
1. The reducer assembly consists of a base unit with 5 rings for height adjustments between 5/8" and 3 1/4". Additional base units are available in full box quantities (128).



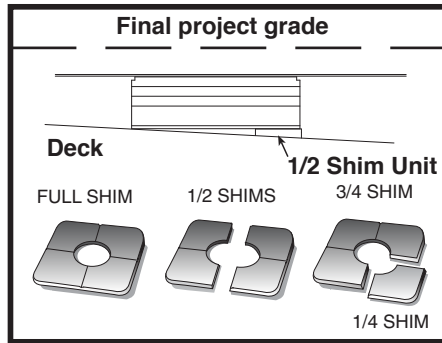
2. Setting base plate on surface, stack reducer rings over each other until required height is approximately reached.



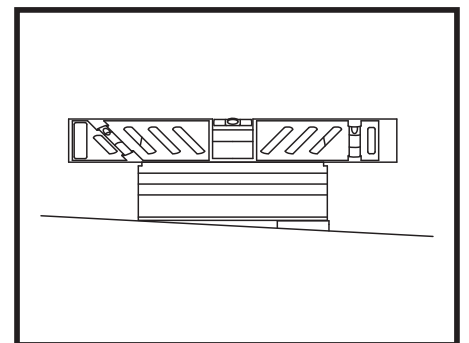
3. Center reducer unit on chalk line(s) previously established for paver layout.



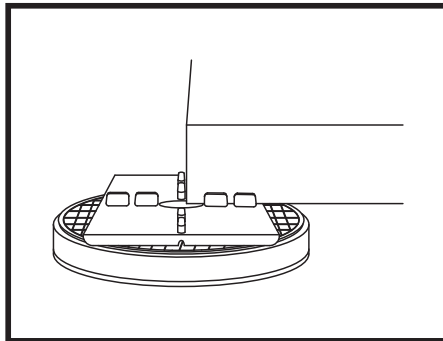
4. Use laser line or equivalent to establish final project grade. Subtract thickness of paver and support unit (Terra-Tab) to determine final reducer height required.



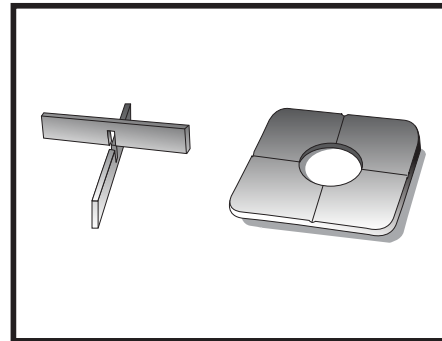
5. Use shim plate (available in 1/16", 1/8" and 1/4") under reducer, when required, to level with laser line. Shims are scored to allow field cutting.



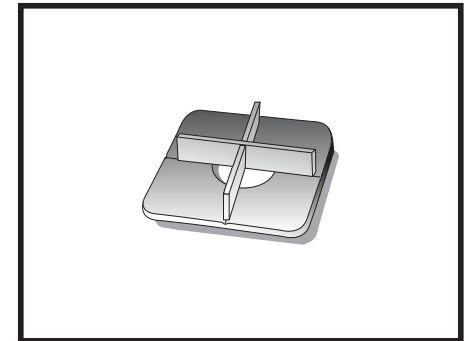
6. Check level of reducer in both directions. Make any necessary adjustments required using a shim plate (see #4).



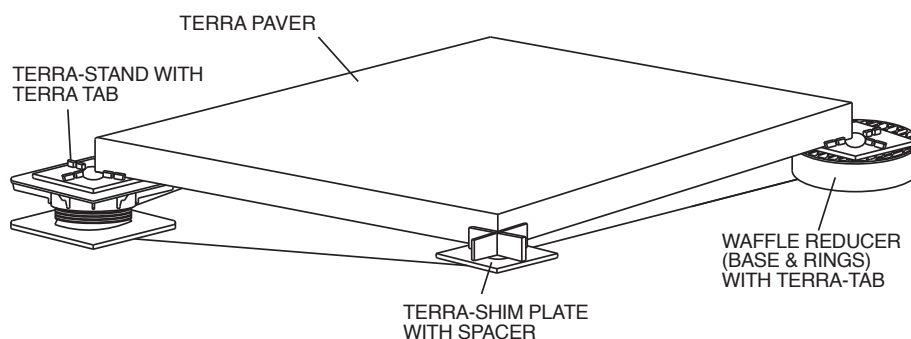
7. Place Terra-Tab paver support unit on top of reducer and install pavers. See back of instructions for details.



8. Occasionally height limitation is less than what the reducer or Terra-Tab can accommodate. (See step 9)



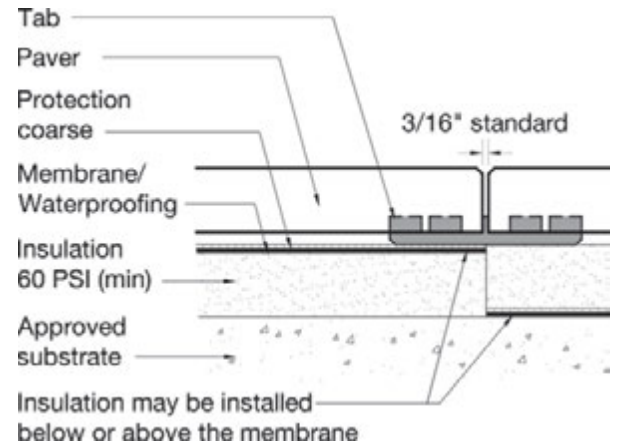
9. When height clearance is limited, the use of shim plates with 3/16" or 1/8" spacers may be required.



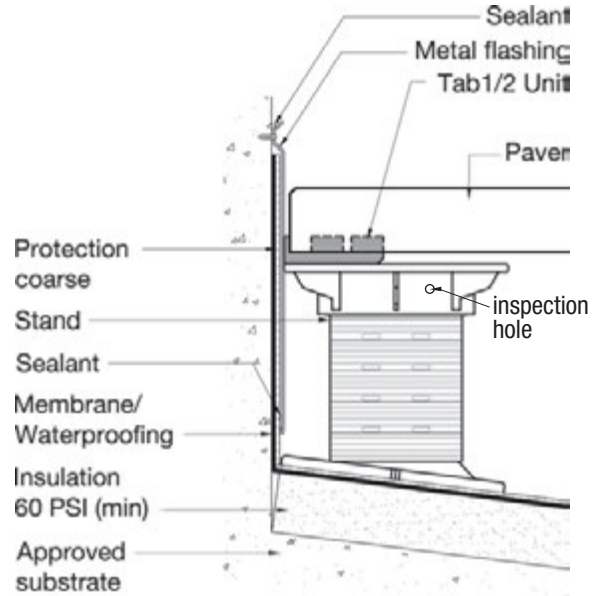


Installation DETAILS

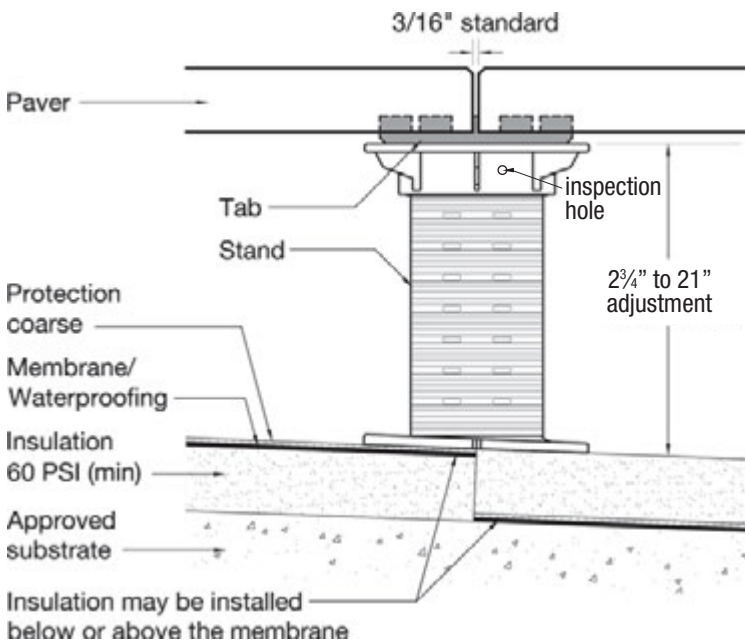
Wausau Tab at Joint



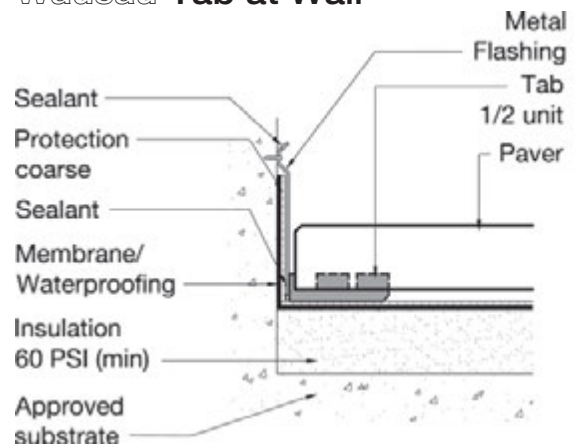
Wausau Pedestal with Tab at Wall



Wausau Pedestal at Joint



Wausau Tab at Wall





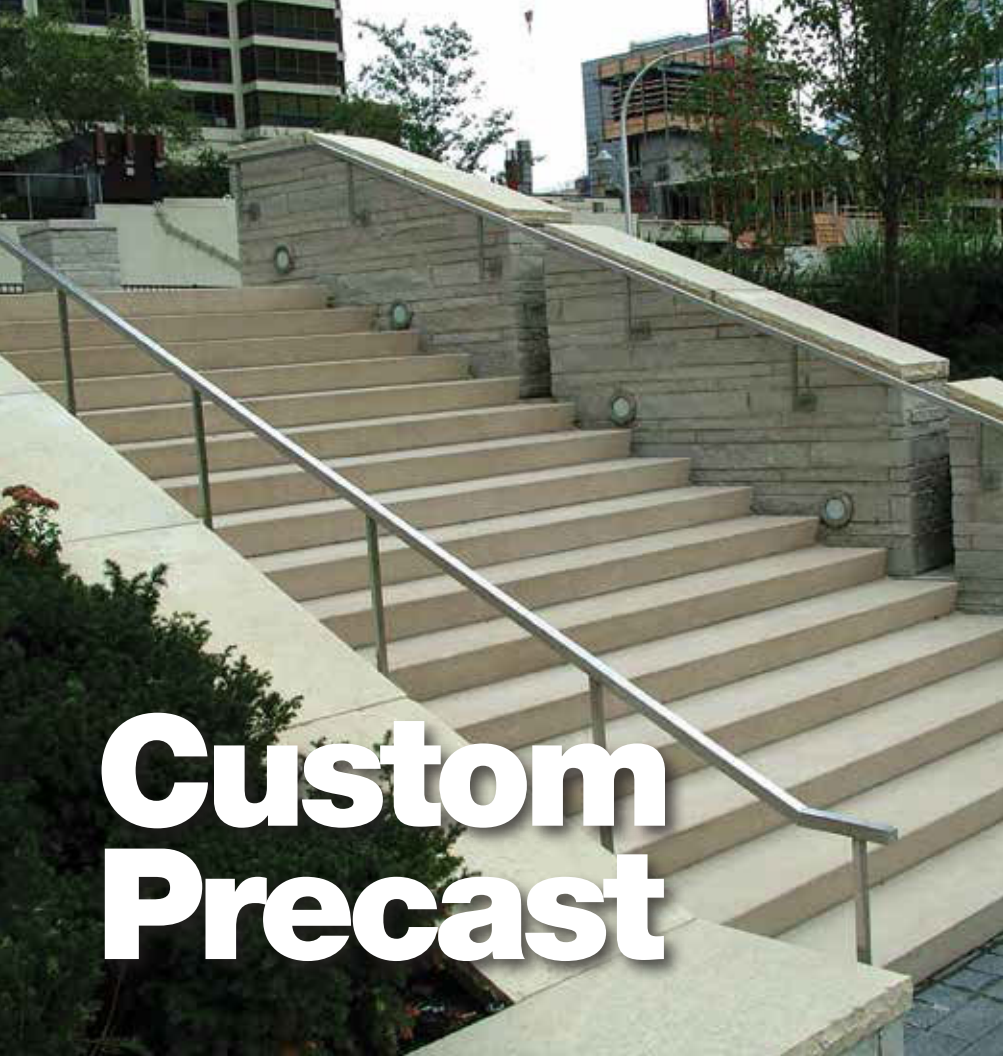
Waterjet DESIGNS



Water-jet Technology is the quickest, most efficient method of cutting pavers to achieve the ultimate in design accuracy and eye appeal.

The water is filtered, compressed and emitted at ultrasonic speed. The result is a jet stream that cuts cleanly with no rough edges.

Arcs, circles and other intricate designs can be cut using the precise water-jet cutting techniques to create a work of art with pavers.



Custom Precast



Wausau Tile Inc. also manufactures custom precast concrete to the highest standards of quality and service.

Lakeshore East, Chicago, IL





Harvard University, Cambridge, MA



Marie Gabrielle Gardens, Dallas, TX

on back cover: Hollywood Casino, Toledo, OH



WAUSAU PAVING

WAUSAUPAVING.COM

8 0 0 - 3 8 8 - 8 7 2 8



MADE IN
WAUSAU[®]
Wausau Tile

4-14