

SAF 30 Sealant or  
HP-9800 Liquid Flashing

Gard-Drain 700/or 990

HDPE Protection Roll or  
Hydro-Ultra Mat 12 oz  
(Spot Weld Seams of HDPE)

Hydro-Prufe 80 mil PVC  
Membrane (Loose Laid)

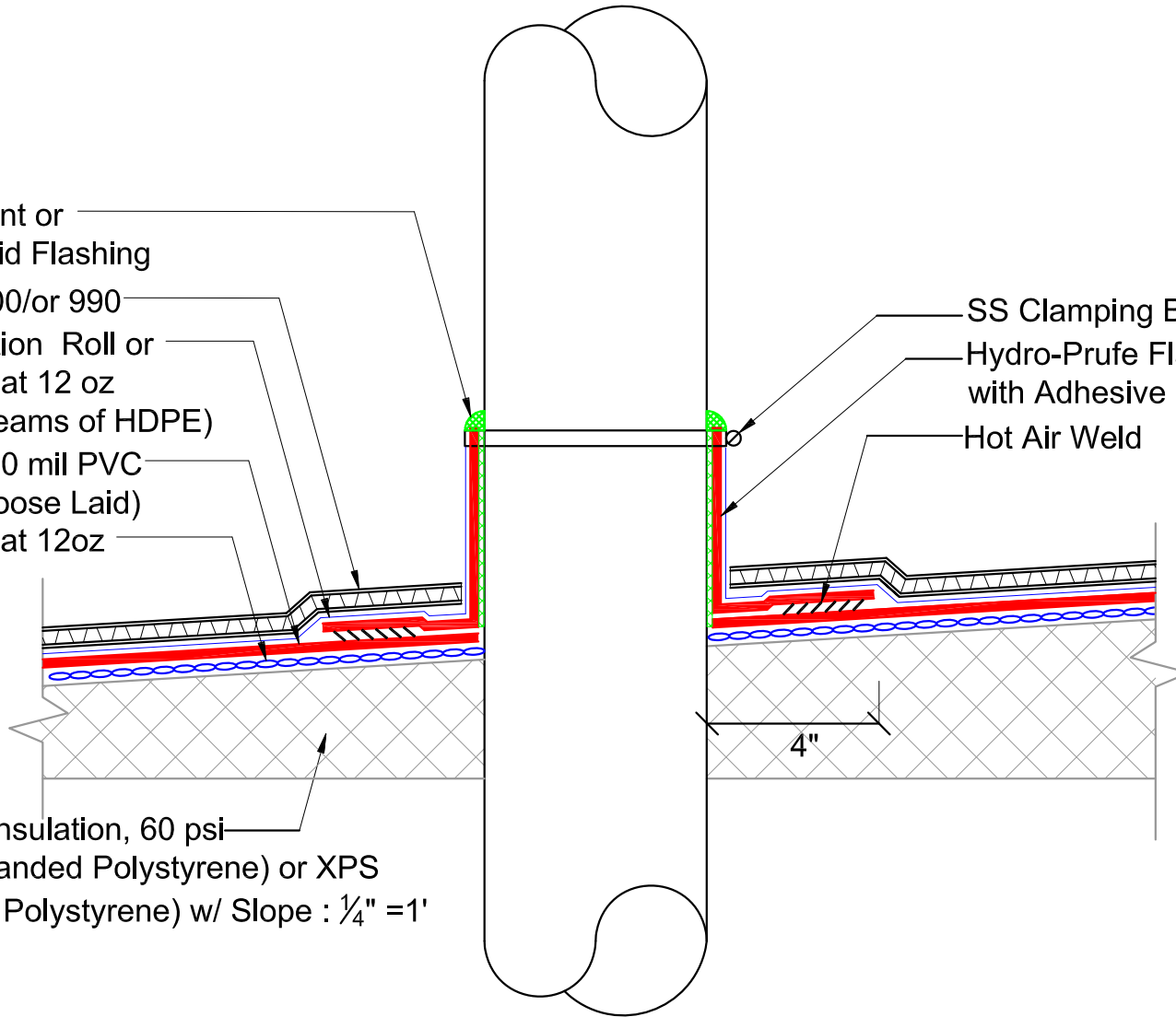
Hydro-Ultra Mat 12oz

SS Clamping Band

Hydro-Prufe Flashing Boot Adher  
with Adhesive U148-A or U410-D

Hot Air Weld

Tapered Insulation, 60 psi  
EPS (Expanded Polystyrene) or XPS  
(Extruded Polystyrene) w/ Slope :  $\frac{1}{4}'' = 1'$   
to drain.



DETAIL NAME:

PIPE PENETRATION IN INSULATION

JOB NAME:

Scale:

NTS

Date:

11-04-15

Drawing #:

HP-PN-004