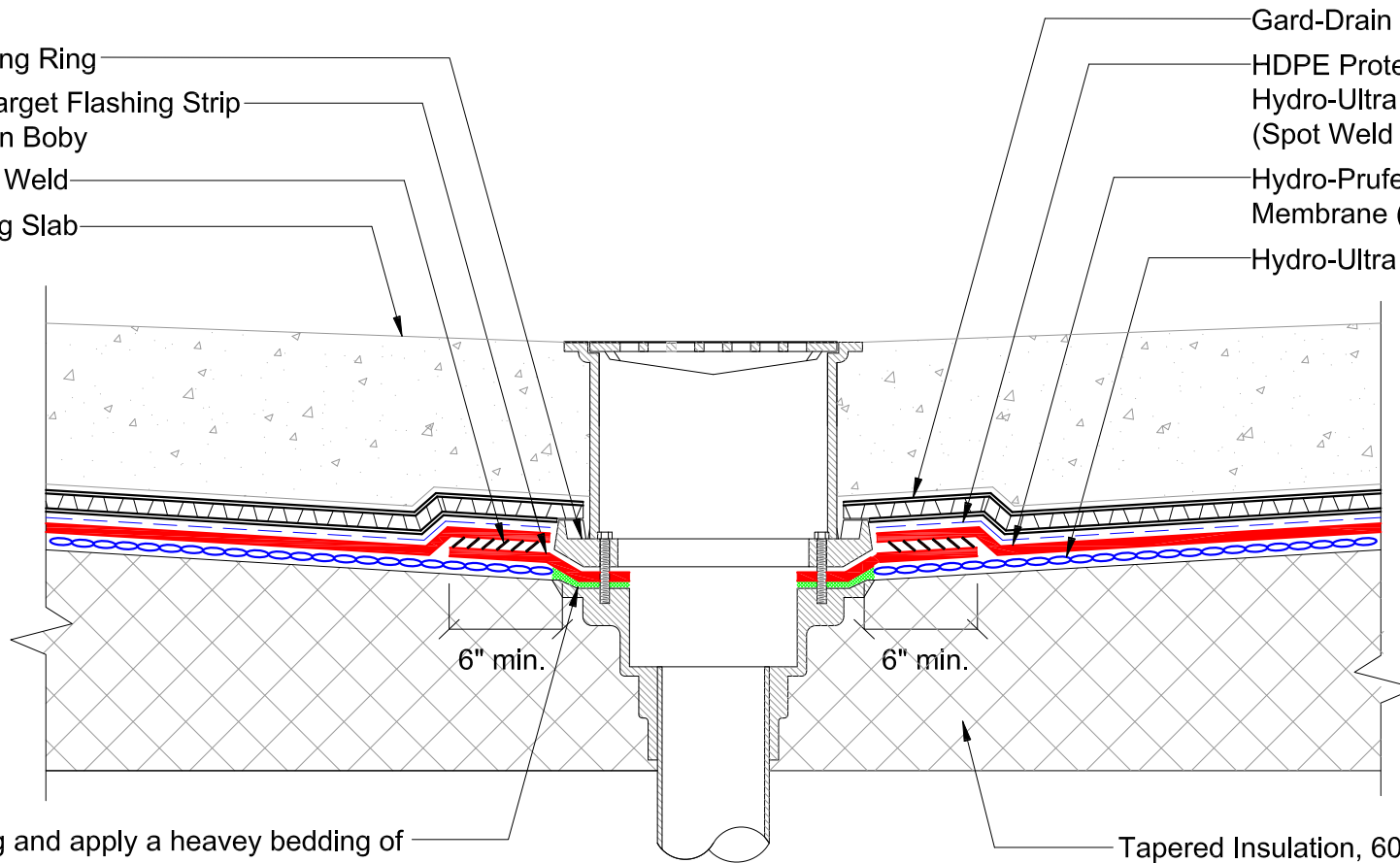


Clamping Ring
 PVC Target Flashing Strip
 @ Drain Body
 Hot Air Weld
 Topping Slab

Gard-Drain 700/or 990
 HDPE Protection Roll or
 Hydro-Ultra Mat 12oz
 (Spot Weld Seams of HDPE)
 Hydro-Prufe 80 mil PVC
 Membrane (Loose Laid)
 Hydro-Ultra Mat 12oz



Clean Drain Ring and apply a heavy bedding of SAF-30 at Drain as shown and immediately embed Hydro-Prufe Flashing Strip into wet SAF-30. Install Clamping Ring and Bolt securely.
 (Apply SAF-30 to Drain Body a minimum of 1/4" thick)

Tapered Insulation, 60 psi
 EPS (Expanded Polystyrene) or
 XPS (Extruded Polystyrene) w/
 Slope : 1/4" = 1' to drain.



DETAIL NAME:

**DRAIN DETAIL
 WITH TAPERED INSULATION**

JOB NAME:

Scale:

NTS

Date:

10-27-15

Drawing #:

HP-DR-005