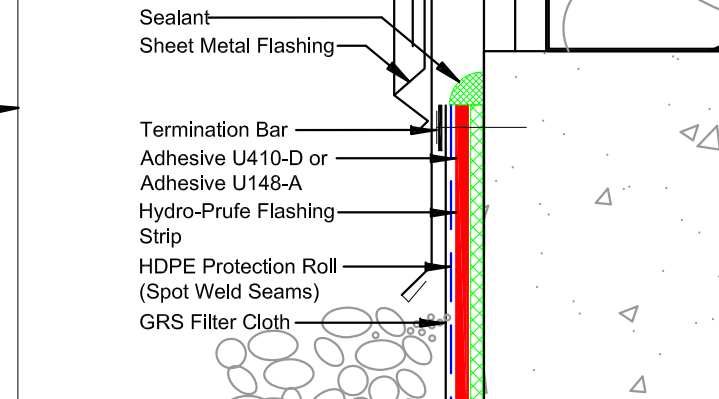


- Sheet Metal Flashing
- Rock Ballast
- Hydro-Prufe Flashing Strip
- Hot Air Weld
- Hydro-Ultra Mat 12oz
- Hydro-Prufe 80mil PVC Membrane (Loose Laid)
- HDPE Protection Roll (Spot Weld Seams)
- Gard Drain 400 RB-WT
- Metal Edge Strip or Precast Divider
- Hydro-Retention 22 Mat
- GRS Filter Cloth
- Vegetation
- Growing Media
- Gard-Drain GRS
- 40 psi XPS Insulation (Optional)



- Sealant
- Termination Bar
- Adhesive U410-D or U148-A
- Adhesive U148-A
- Termination Bar



DETAIL NAME: **GREEN ROOF @ STUCCO WALL CONDITION**

JOB NAME:

Scale:	Date:	Drawing #:
NTS	12-01-14	HP-GR-003