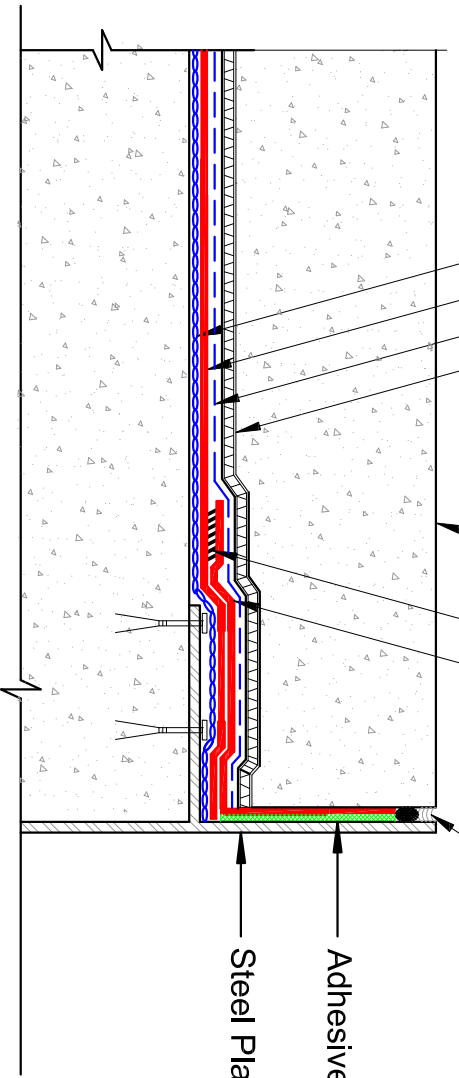


- Gard-Drain 700/or 990
- HDPE Protection Roll or Hydro-Ultra Mat 12 oz (Spot Weld Seams of HDPE)
- Hydro-Prufe 80 mil PVC Membrane (Loose Laid)
- Hydro-Ultra Mat 12oz
- Topping Slab
- Hot Air Weld
- Hydro-Prufe Flashing Strip
- Backer Rod & Sealant
- Adhesive U410-D on Steel
- Steel Plate Curb



DETAIL NAME:

STEEL PLATE CURB (TYPICAL)



JOB NAME:

Scale:

NTS

Date:

10-27-14

Drawing #:

HP-SD-004