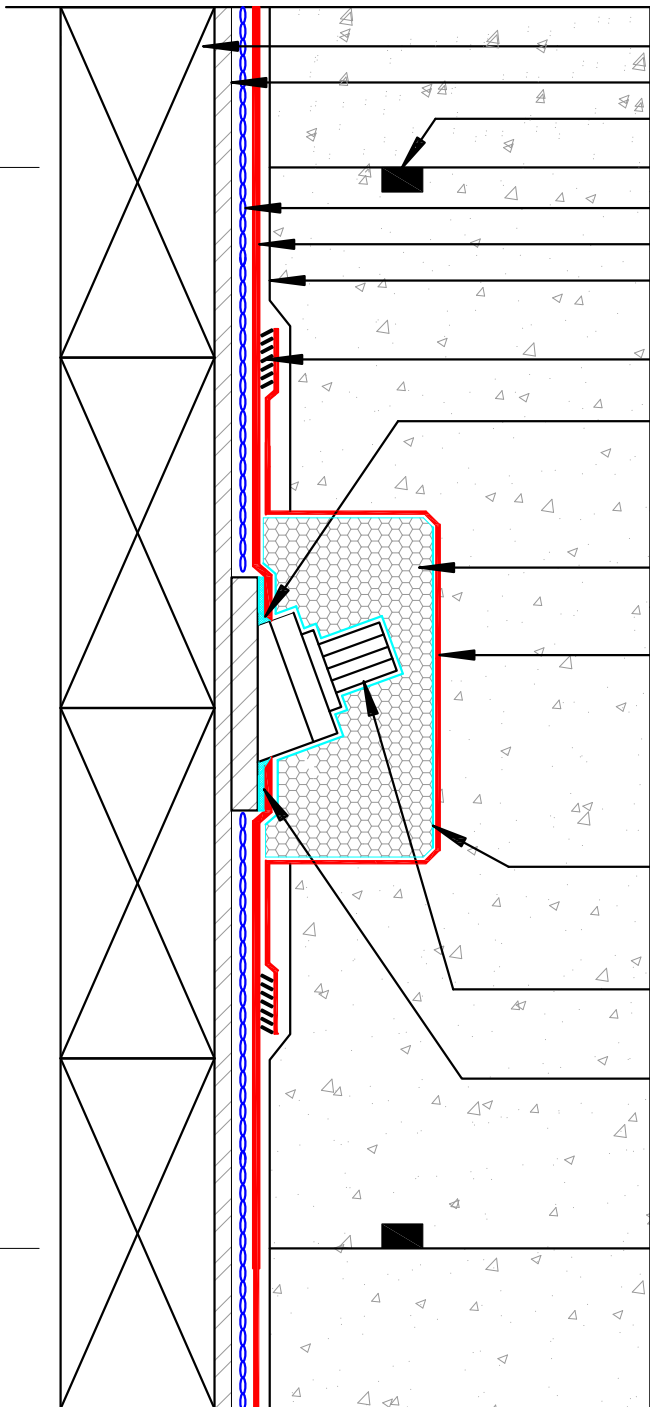


24"x24" formed Tie-Back Block Out



- Lagging
- Face of Steel Soldier Pile
- Waterstop - B (Typ)
- Hydro-Ultra Mat or Hydro-Ultra Mat B
- Hydro-Prufe 80 mil PVC Membrane
- HDPE Protection Layer or Hydro-Ultra Mat 8 oz(min)
- Hot Air Weld
- HP-9800 apply to back side of Hydro-Prufe 80 mil PVC Membrane
- EPS Foam Block cover field cut to fit over Tie Back Head
- Field Fabricated Hydro-Prufe Flashing Sheet over EPS Block. Spot Glue with SAF-30 or U-410-A Adhesive. Weld and probe all seams of PVC Boot.
- Adhere/Glue EPS Block to Hydro-Prufe Field Membrane with SAF-30 or U-410-A Adhesive
- Tie-Back Head (Cut strands off flush with head)
- HP-9800 apply to back side of Hydro-Prufe 80 mil PVC Membrane



DETAIL NAME:

TIE-BACK BOOT DETAIL (BLOCK OUT)

Scale: NTS

Date: 03-10-15

Drawing #: SH-0113